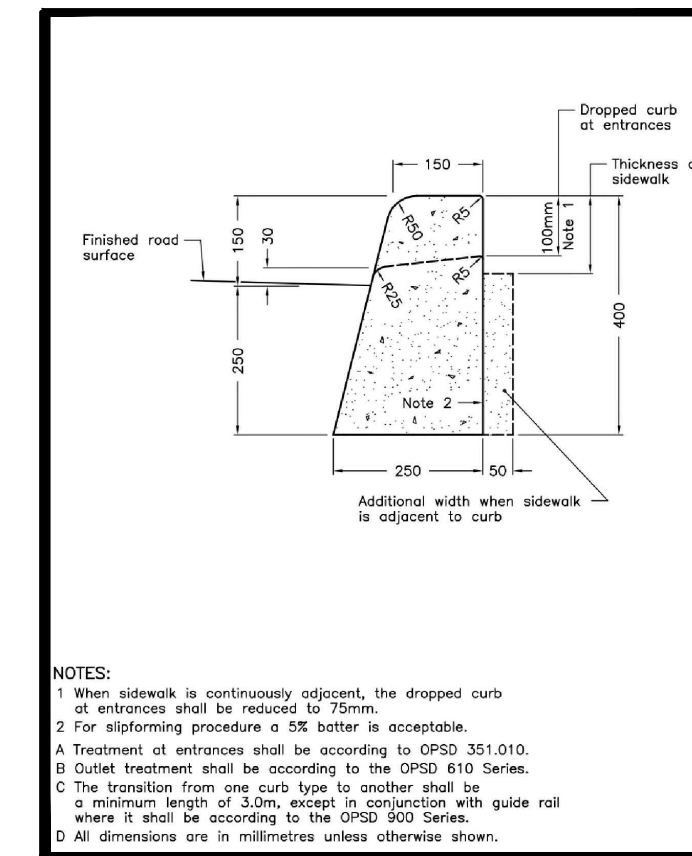
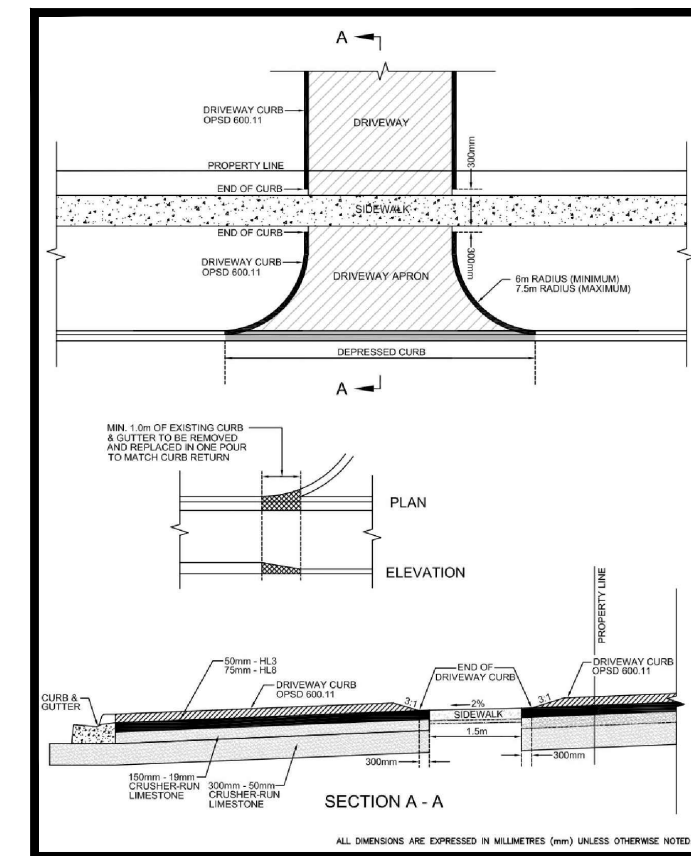
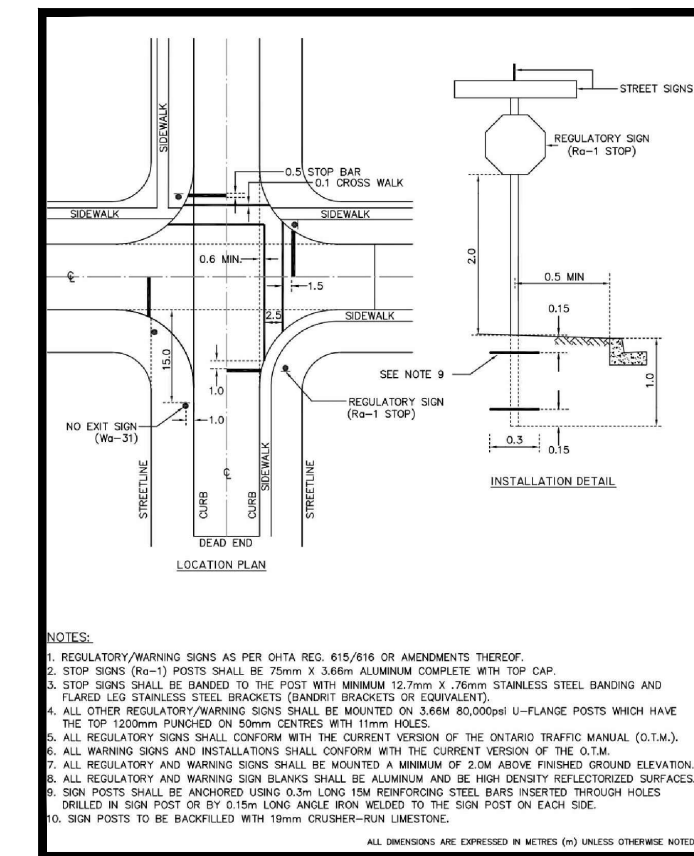


BLOCK #	BUILDING	USE	BUILDING AREA		SEC FL/MEZZ FL		TOTAL GFA		BLOCK AREA (SM)	T. GFA/BLOCK (%)	GFA/BLOCK COVER.	PARKING REQUIRED			PROPOSED PARKING		
			[SM]	[SF]	[SM]	[SF]	[SM]	[SF]				STANDARD	BARRIER-FREE	TOTAL	STANDARD	BARRIER-FREE	TOTAL
BLOCK 1	BUILDING A (1-STORY)	RESTAURANT	292.29	3,146.16	N/A	N/A	292.25	3,145.75	5553.02	3.41%	3.41%	32 (11/100SM)	1	33	51	3	54
BLOCK 1 (COMBINED)	BUILDING B (1-STORY)	RESTAURANT	235.54	2,535.34	N/A	N/A	235.54	2,535.34				26 (11/100SM)	2	27			
BLOCK 1A								4126.54									
BLOCK 2	BUILDING E (1-STORY)	EMPLOYMENT	2,630.54	28,314.82	1,052.20	11,325.82	3,682.74	39,640.64	7849.90	41.09%	29.35%	66	3	69	67	3	70
BLOCK 3	BUILDING F (1-STORY)	EMPLOYMENT	7,760.37	83,531.93	2,325.54	25,031.88	10,085.90	108,563.79	17,949.85	56.19%	43.23%	108	4	112	99	4	103
BLOCK 4																	
BLOCK 5	BUILDING I (1-STORY)	EMPLOYMENT	5,913.79	63,655.51	2,330.01	25,080.02	8,243.80	88,735.52	13,477.57	61.17%	43.88%	99	4	103	93	4	97
BLOCK 6	BUILDING K (1-STORY)	EMPLOYMENT	3,912.23	42,110.85	1,554.97	16,737.54	5,467.20	58,848.39		27.18%	19.45%	84					
BLOCK 7	BUILDING L (2-STORIES) - MULTIPLE UNIT	EMPLOYMENT	3,561.62	38,336.96	1,188.50	12,792.90	4,750.12	51,129.86	20,114.19	23.62%	17.71%	77					
BLOCK 7 (COMBINED)	BUILDING L (2-STORIES) - OFFICE	OFFICE								2.65%		19 (3.5/100SM)	7	187	178	8	186
TOTAL PARKING			7473.85	80,447.81	3,277.99	35,283.97	10,751.84	115,731.78		53.45%	37.16%	180	20	533	492	22	514

\* BASED ON ZONING BY-LAW #6000-17, THE BUILDING CALCULATED AS MULTIPLE UNIT BUILDINGS WITHIN BUSINESS PARK ZONE.  
 MULTIPLE UNIT BUILDINGS WITHIN BUSINESS PARK ZONE: RESTAURANT: BARRIER FREE PARKING GUIDELINE  
 3.0 SPACES PER 100 SQM FOR FIRST 100 SQM OF GFA, 11.0 SPACES PER 100 SQM OF GFA  
 PLUS 2.0 SPACES PER 100 SQM FOR NEXT 2,100 SQM OF GFA, PLUS 1.0 SPACE PER 100 SQM FOR NEXT 3,000 SQM OF GFA, PLUS 0.5 SPACES PER 100 SQM OF REMAINING GFA.  
 OFFICE: 3.5 SPACES PER 100 SQM OF GFA

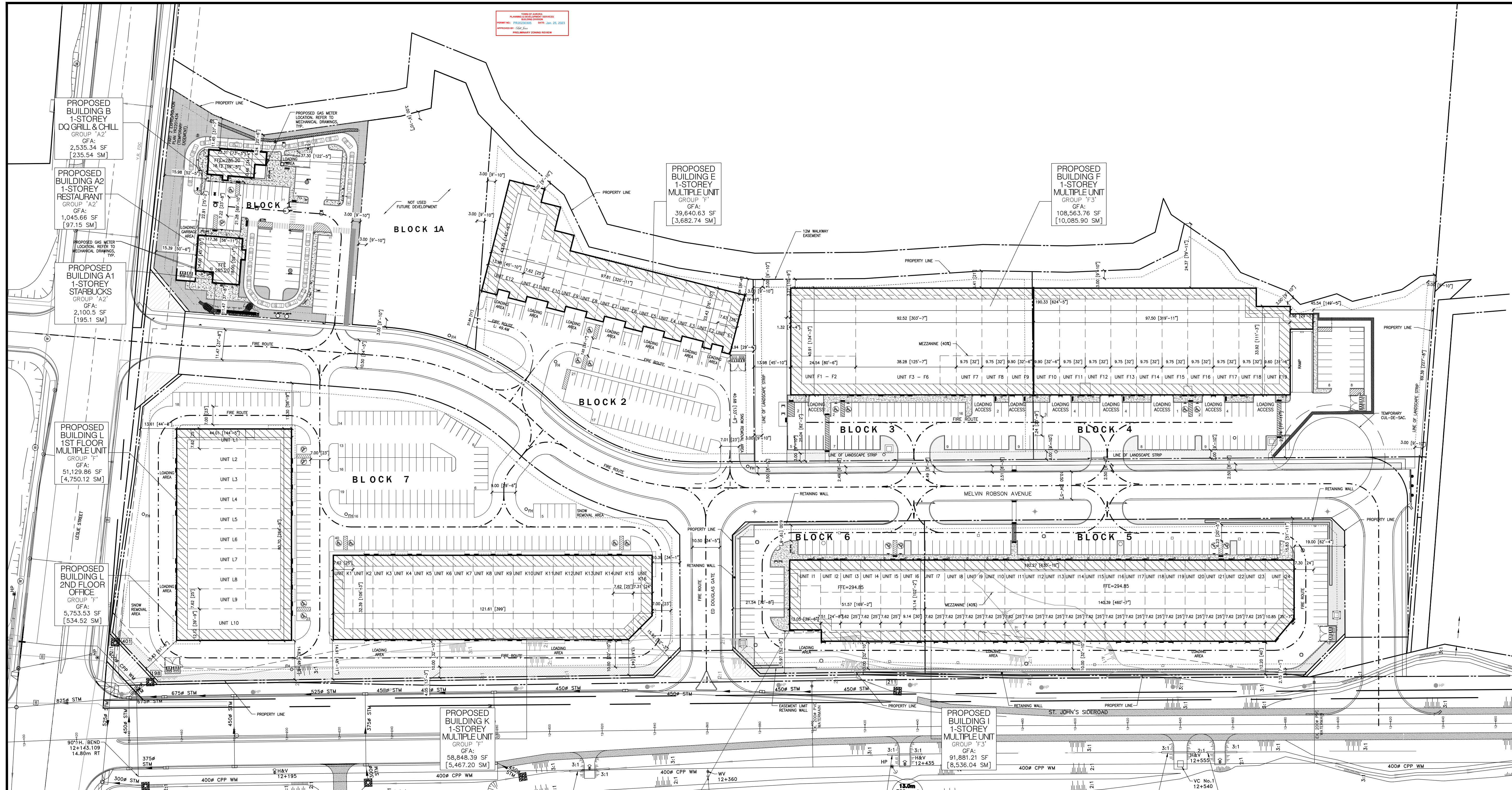


2 SITE STATISTICS  
A0.2 SCALE:

3 R-207 SIGN & PAV.  
A0.2 SCALE:

4 R-215 CURB DETAIL  
A0.2 SCALE:

5 CONCRETE CURB  
A0.2 SCALE:



1 OVERALL SITE PLAN  
A0.2 SCALE: 1:750

This drawing, as an instrument of service, is provided by and is the property of Paul Marques Architect Inc. The contractor must verify and accept responsibility for all dimensions and conditions on site and must notify Paul Marques Architect Inc. of any variations from the supplied information. This drawing is not to be scaled. The architect is not responsible for the accuracy of survey, structural, mechanical, electrical, etc., information shown on this drawing. Refer to the appropriate consultant's drawings before proceeding with the work. Construction must conform to all applicable codes and requirements of authorities having jurisdiction. The contractor working from drawings not specifically marked 'For Construction' must assume full responsibility and bear costs for any corrections or damages resulting from his work.

REV.	ISSUED FOR:	DATE:
	CLIENT REVIEW	01/23/2023



SEAL:



Project:	
BLOCK 5&6 - BUILDING I	
1588 ST. JOHN'S SIDEROAD AURORA, ON	
Drawing Name:	
OVERALL SITE PLAN	
Proj no.:	18-714
Date:	OCTOBER 2018
Drawn by:	CV
Scale:	AS NOTED
Checked by:	PM
North:	Drawing No.:
A0.2	

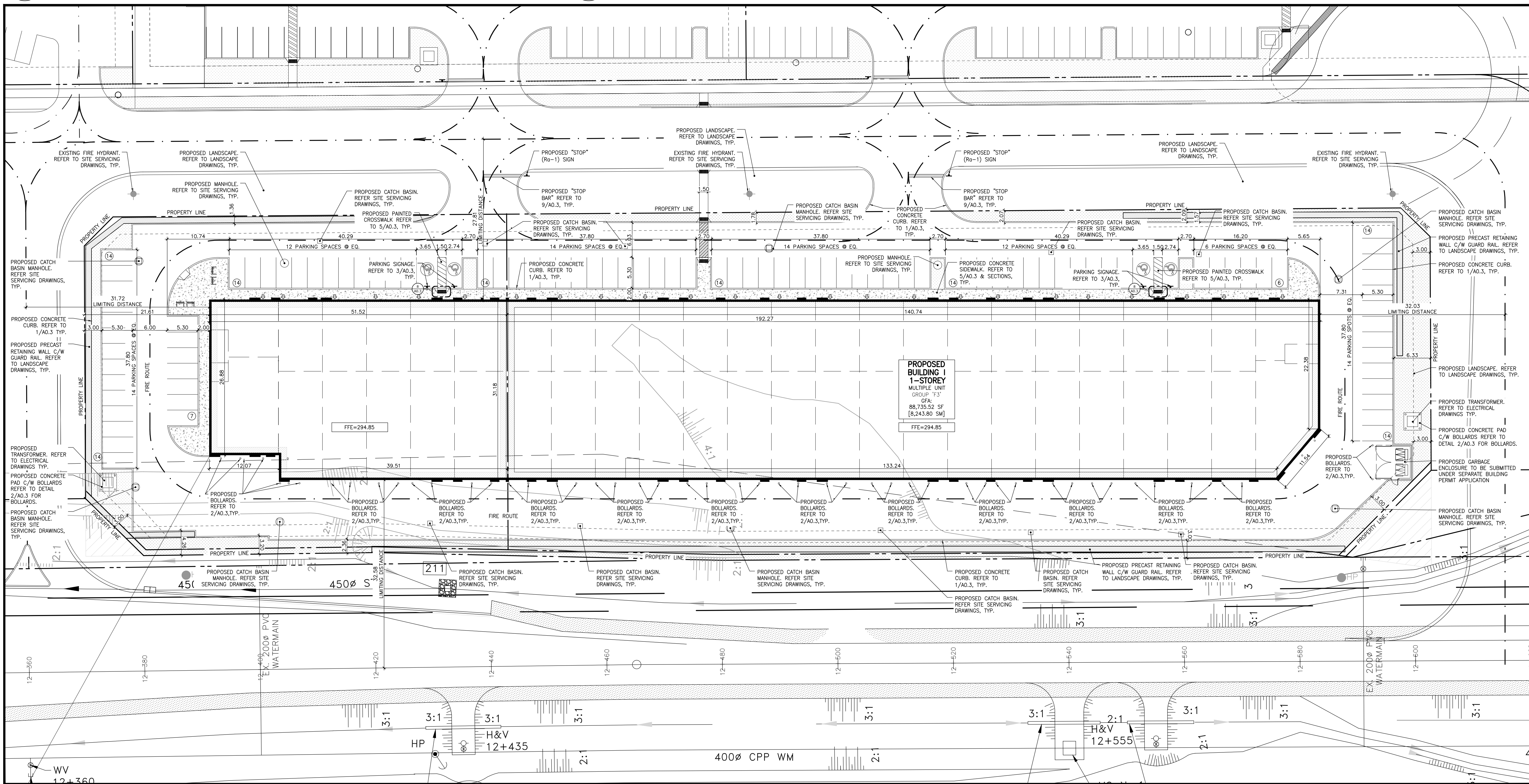


	LEGAL DESCRIPTION AND PROPERTY LINE (SUBJECT LANDS) EASEMENTS (NO BUILD, MTO)
	FIRE ROUTE
	PARCEL LINES
	NEW CONCRETE CURBS C/W SAW CUTS AND EXPANSION JOINTS
	RAISED ISLAND C/W CONCRETE PAVING AND CONCRETE CURBS
	RAISED ISLAND C/W CONCRETE CURBS AND LANDSCAPING
	PAINTED LINES (REFER TO SITE DETAILS)
	NEW CONCRETE SIDEWALK MONOLITHIC POUR C/W SAWCUTS
	PAINTED PEDESTRIAN CROSSWALK (REFER TO SITE DETAILS)
	NEW OR RELOCATED FIRE HYDRANT
	EXISTING FIRE HYDRANT
	STOP SIGNS
	'NO LEFT TURN' SIGNS
	FIRE ROUTE SIGNS

	SIAMESE CONNECTION
	PROPOSED GRADE ELEVATION
	EXISTING GRADE ELEVATION
	NEW SITE SERVICES (REFER TO SITE SERVICES DRAWINGS)
	PAINTED TRAFFIC LINES (REFER TO SITE DETAILS)
	PROPOSED LOCATION OF LIGHT STANDARD (2 FIXTURES)
	PROPOSED LOCATION OF LIGHT STANDARD (1 FIXTURE)
	PROPOSED LOCATION OF TRANSFORMER (SEE SITE ELECTRICAL)
	PROPOSED LOCATION OF SWITCH GEAR (SEE SITE ELECTRICAL)
	PROPOSED LOCATION OF BUILDING ENTRY

**2** LEGEND  
A0.21 SCALE: NTS

**3** NOT USED  
A0.21 SCALE: NTS



**1** BLOCK 5&6 - BUILDING "I" SITE PLAN  
A0.21 SCALE: 1:300

This drawing, as an instrument of service, is provided by and is the property of Paul Marques Architect Inc. The contractor must verify and accept responsibility for all dimensions and conditions on site and must notify Paul Marques Architect Inc. of any variations from the supplied information. This drawing is not to be scaled. The architect is not responsible for the accuracy of survey, structural, mechanical, electrical, etc., information shown on this drawing. Refer to the appropriate consultant's drawings before proceeding with the work. Construction must conform to all applicable codes and requirements of authorities having jurisdiction. The contractor working from drawings not specifically marked 'For Construction' must assume full responsibility and bear costs for any corrections or damages resulting from his work.

REV.	ISSUED FOR:	DATE:
	CLIENT REVIEW	01/23/2023

**paul marques**  
architect inc  
2610 WESTON ROAD, SUITE 207  
TORONTO, ON M9N 2B1  
TEL: 647.352.2121 | WWW.PMARCHE.CA

SEAL:

**novus**  
Fire Protection Consulting Inc.  
110 Woodbine Downs Blvd., Unit 4B, Toronto, Ontario M9W 5S6  
Tel: 416-746-2590 www.novusfire.com Fax: 416-746-2526

**UNITED ENGINEERING INC.**  
Mechanical Electrical Consulting Engineers  
3645 Keele Street, Suite 105,  
Toronto, Ontario, M3J 1M6  
Tel: (416) 398 1999, Fax: (416) 398 1933

**Jablonsky, Ast and Partners CONSULTING ENGINEERS**  
400-3 CONCORDE GATE  
TORONTO, ON. M3C 4H9  
TEL: 416-447-7405  
FAX: 416-447-2771

**HAVEN DEVELOPMENTS**

Project: BLOCK 5&6 - BUILDING I  
1588 ST. JOHN'S SIDEROAD AURORA, ON  
Drawing Name: SITE PLAN  
Proj no.: 18-714 Date: OCTOBER 2018  
Drawn by: CV Scale: AS NOTED  
Checked by: PM  
North: Drawing No: A0.21