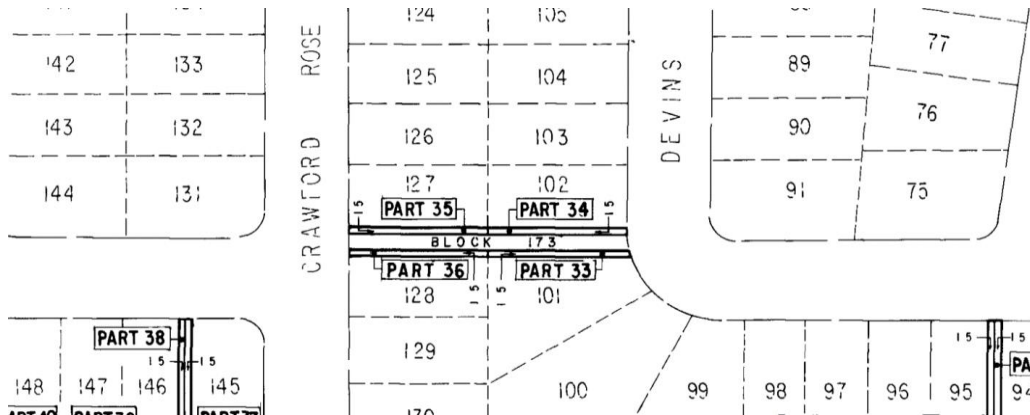
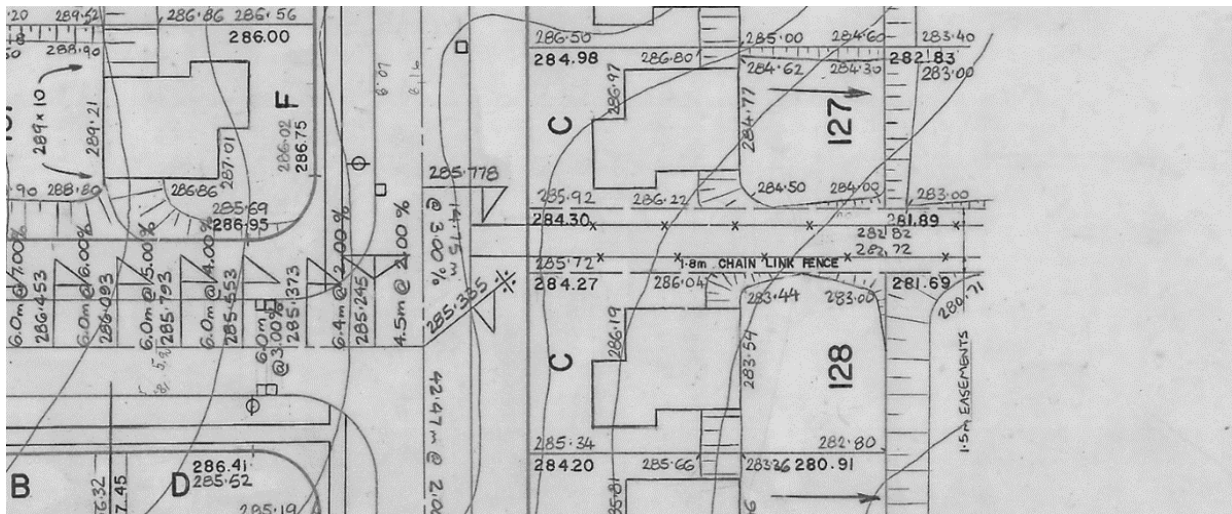


**Figure 1 – Image showing a 1.5-meter registered easement on the north and south side of this walkway:**



**Figure 2 – Approved plan showing 1.5 easement with no retaining wall at Lot 127-108 Crawford Rose:**



**Figure 3 – Images of the failing retaining wall with the chain-link fence leaning into the walkway:**



**Figure 4 – images of the challenges in plowing this walkway due to a streetlight being installed in the middle of this walkway at both ends:**



**Figure 4 – images of the challenges in plowing this walkway due to a streetlight being installed in the middle of this walkway at both ends:**



Operations also maintains a Sanitary sewer main and a Storm sewer main under this walkway. Storm water and sanitary manholes require adjustment due to heaving and failed adjustment units which are currently causing uneven walking surfaces.

**Figure 5 – Sidewalk panels heaved:**



Other documented deficiencies include cracked panels, heaved sidewalk bays, separations creating large gaps pose a trip hazard to walkway users.

**Figure 6 – Longitudinal joint deflections and uneven walking surface:**

