

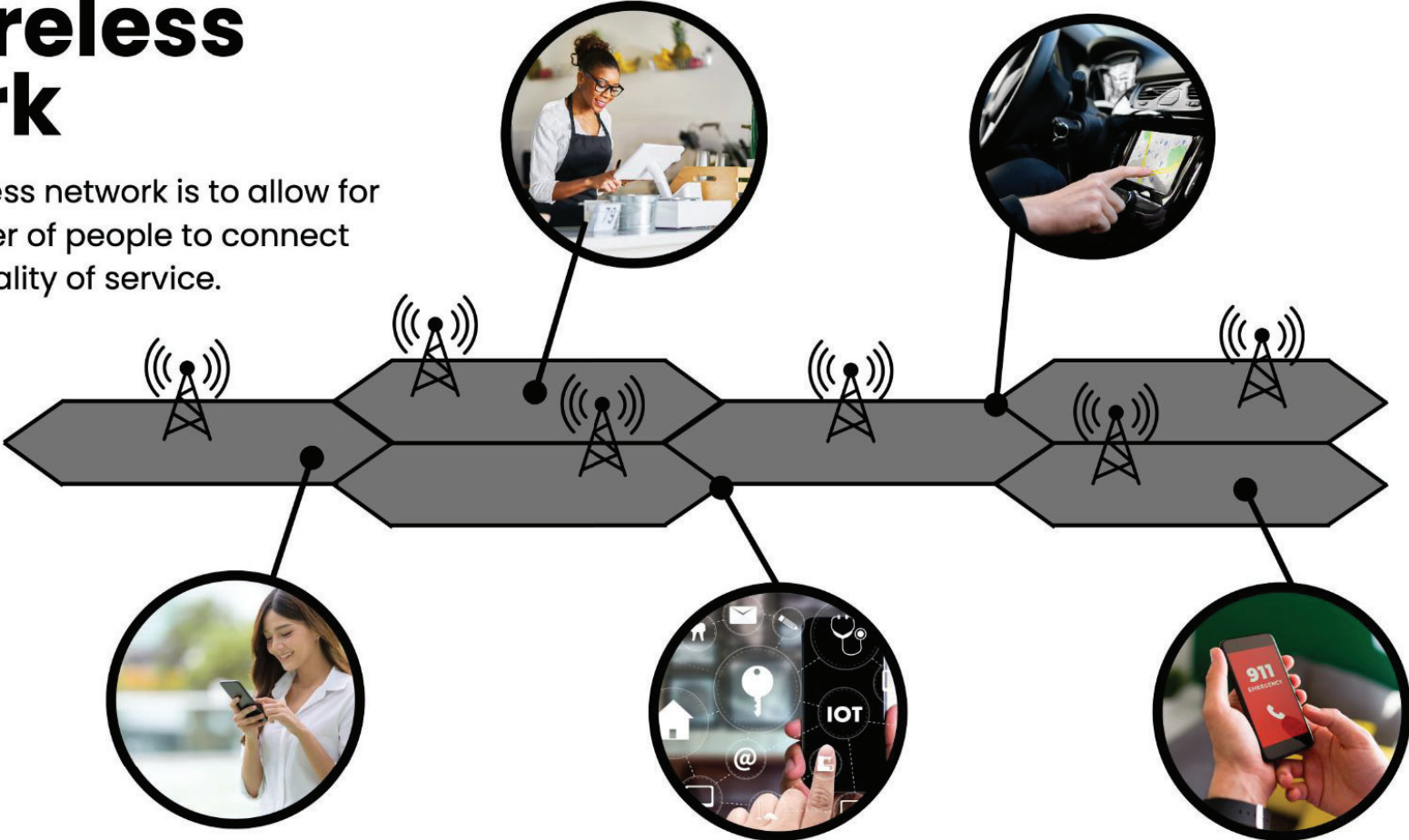


15400 Bayview Avenue, Aurora, ON

Proposed Telecommunication Tower

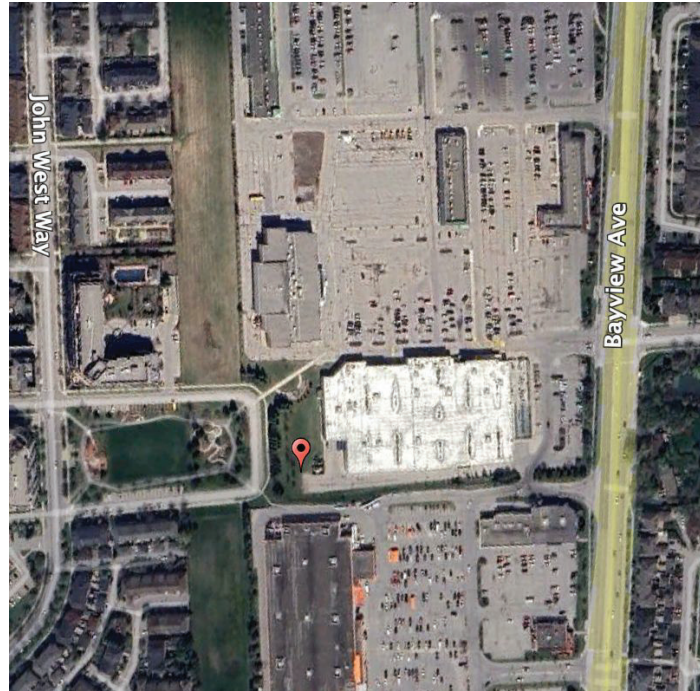
The Wireless Network

A goal for the wireless network is to allow for the greatest number of people to connect with the highest quality of service.



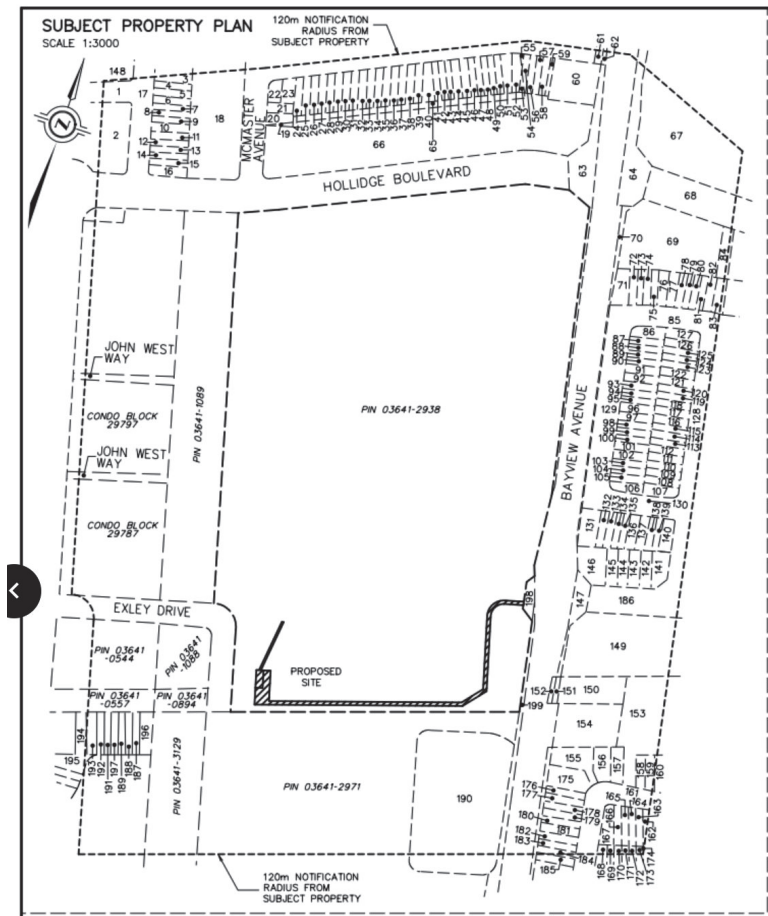
Subject Site

Shared Tower is proposing a **40 metre flush-mounted monopole style tower at 15400 Bayview Avenue.**



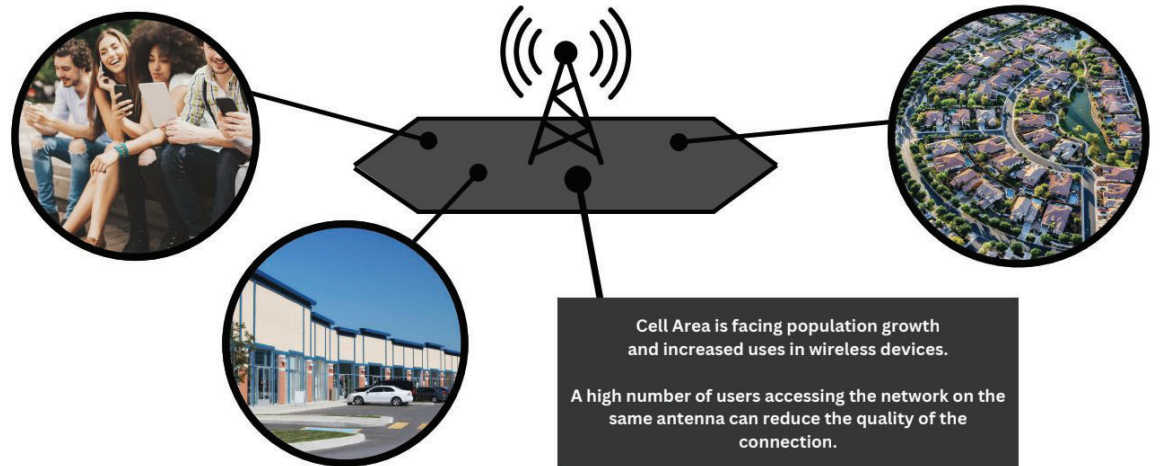
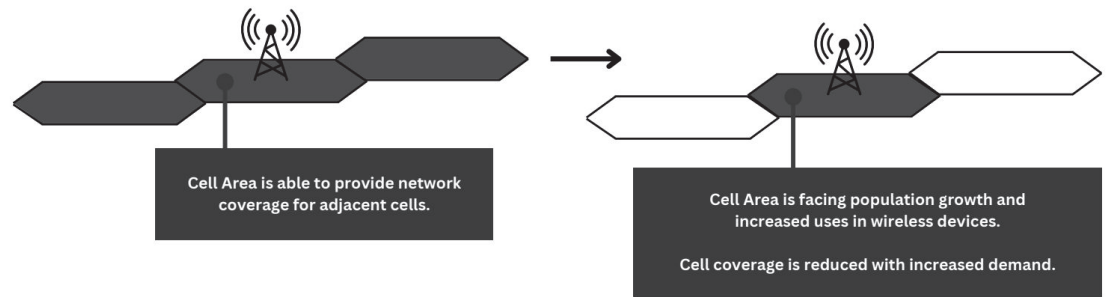
Public Consultation Statistics

- 384 Notification Packages sent out to properties within the prescribed notification radius of 120m from the Subject Site's Property Lines
- Number of Residents who reached out with questions and comments: 8
- Number of Residents who attended the Public Information Session: approx. 15



What impacts the Wireless Network - Capacity

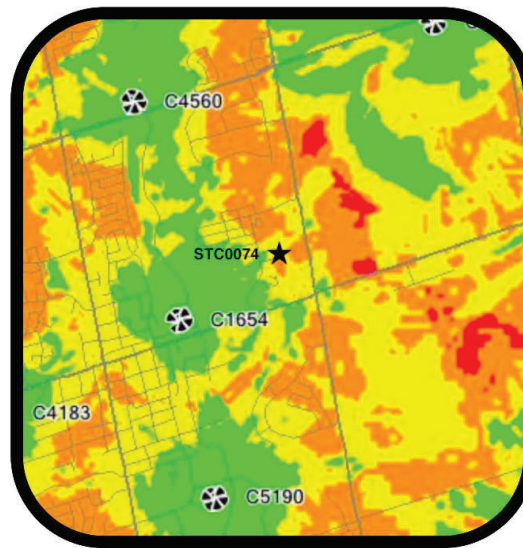
As more of the population uses the network for school, work, and personal use, further support is required to ensure the same level of service.



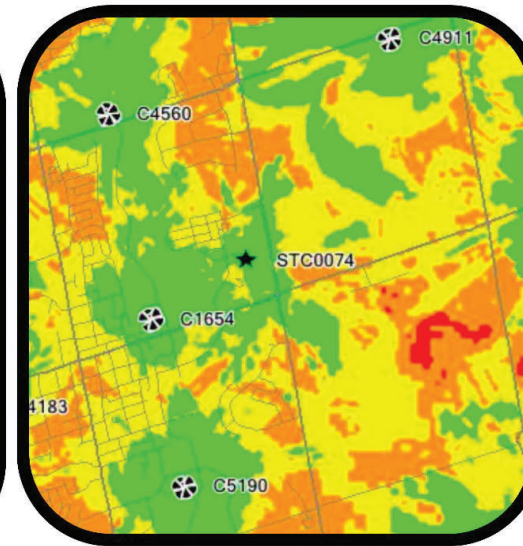
Propagation Study Comparison

Study completed by YRH Montreal

Before



After

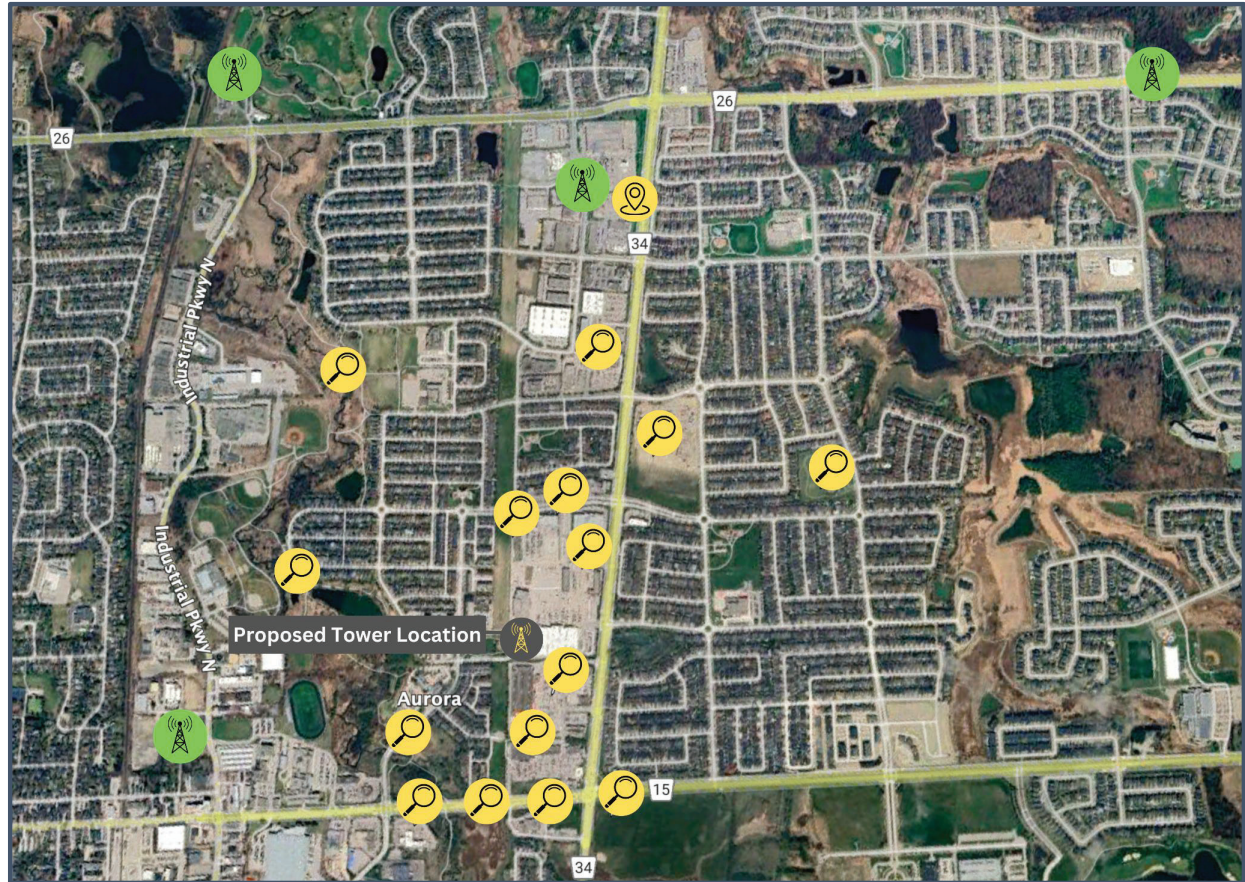


Downlink RSRP	Color	
-125 to -115 dBm	Grey	
-115 to -105 dBm	Red	Very poor coverage - minimal voice call capabilities
-105 to -95 dBm	Orange	Poor coverage - voice call capabilities
-95 to -85 dBm	Yellow	Adequate coverage - voice calls, low throughput data streaming
-85 to 0 dBm	Green	Great coverage - voice calls, high throughput data streaming

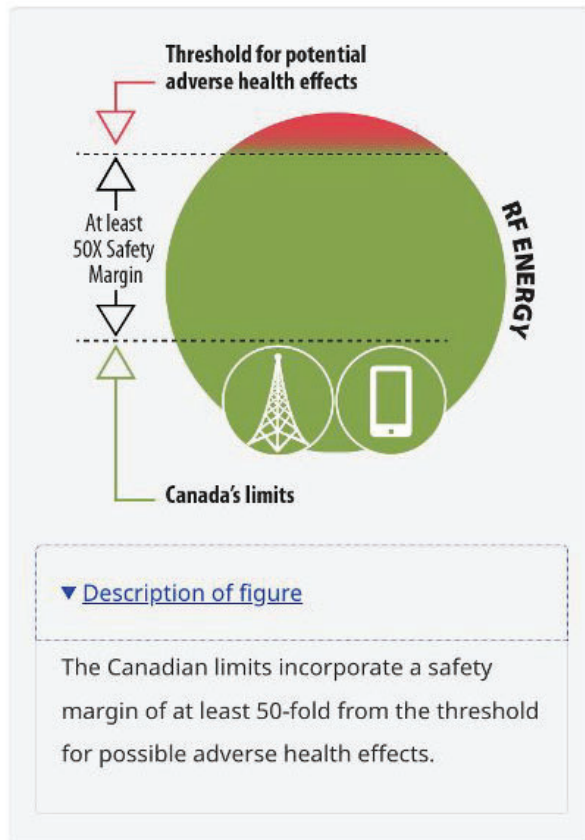
Site Selection

The siting of tower locations is dependent on a number of factors. Among the factors considered are:

- expected usage patterns of service and proximity to users
- local topography and building types
- interaction with existing and future sites
- line-of-sight requirements for high quality communications
- opportunities to use existing structures
- availability of a willing Landlord
- the industry's commitment to high service standards and customer satisfaction



Health Canada's Safety Code 6



Site compliance

Maximum RF exposure with respect to the uncontrolled environment limit

Maximum simulated exposure on this site from (O)perators :	10.8%
Maximum simulated exposure on this site from (B)roadcasters :	0%
Maximum total simulated exposure on this site O+B :	10.8%

Final result



The site is **compliant** with the maximum exposure limits established in Health Canada's Safety Code 6 for **uncontrolled environment**.

N/A

The site is **compliant** with the maximum exposure limits established in Health Canada's Safety Code 6 for **controlled environment**.

RF simulation result

The analysis shows that the RF levels at 2m above the nearest buildings rooftops RF levels would not exceed 10.8% of the uncontrolled environment limit. Levels 2m above the ground would not exceed 6% of the uncontrolled environment limit. The site is therefore compliant with the uncontrolled environment limit.

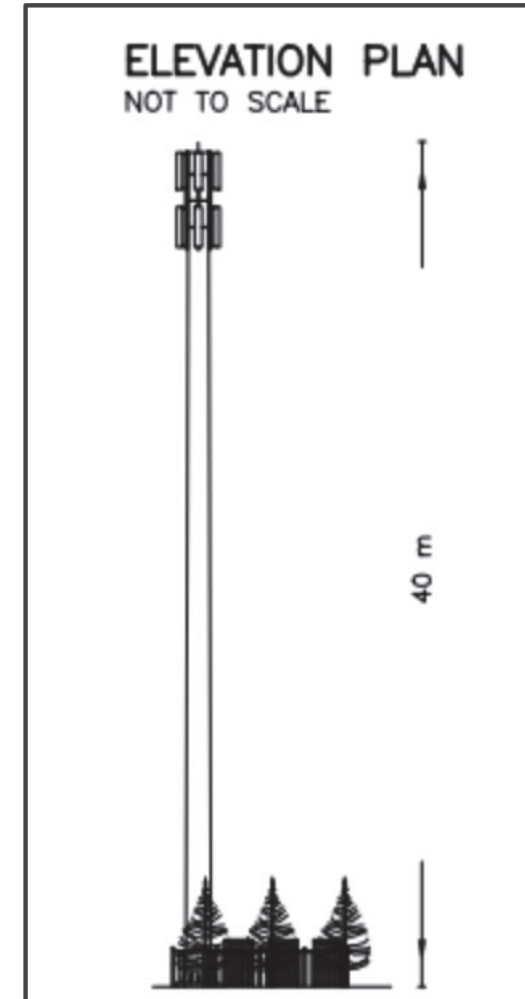
STC0074 - Closeby Existing Towers



Plan

Shared Tower is proposing a **40 metre flush-mounted monopole** style tower at **15400 Bayview Avenue, Aurora.**

This tower will be built and allow for multi-carrier collocation opportunities in the area.





Questions?

I am happy to have this opportunity to speak to the Committee of the Whole and would like to open the floor for any questions.

Proponent Contact:

Sandra Hallig, Planning Coordinator

Email: shallig@sharedtower.ca

Cheyenne Zierler, Sr. Planning Manager

Email: czierler@sharedtower.ca

