



LOCATION MAP

APPLICANT: Charlieville Developments Ltd.
 FILE: SUB-2015-03

 Subject Lands

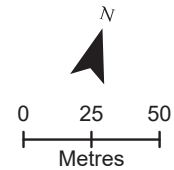
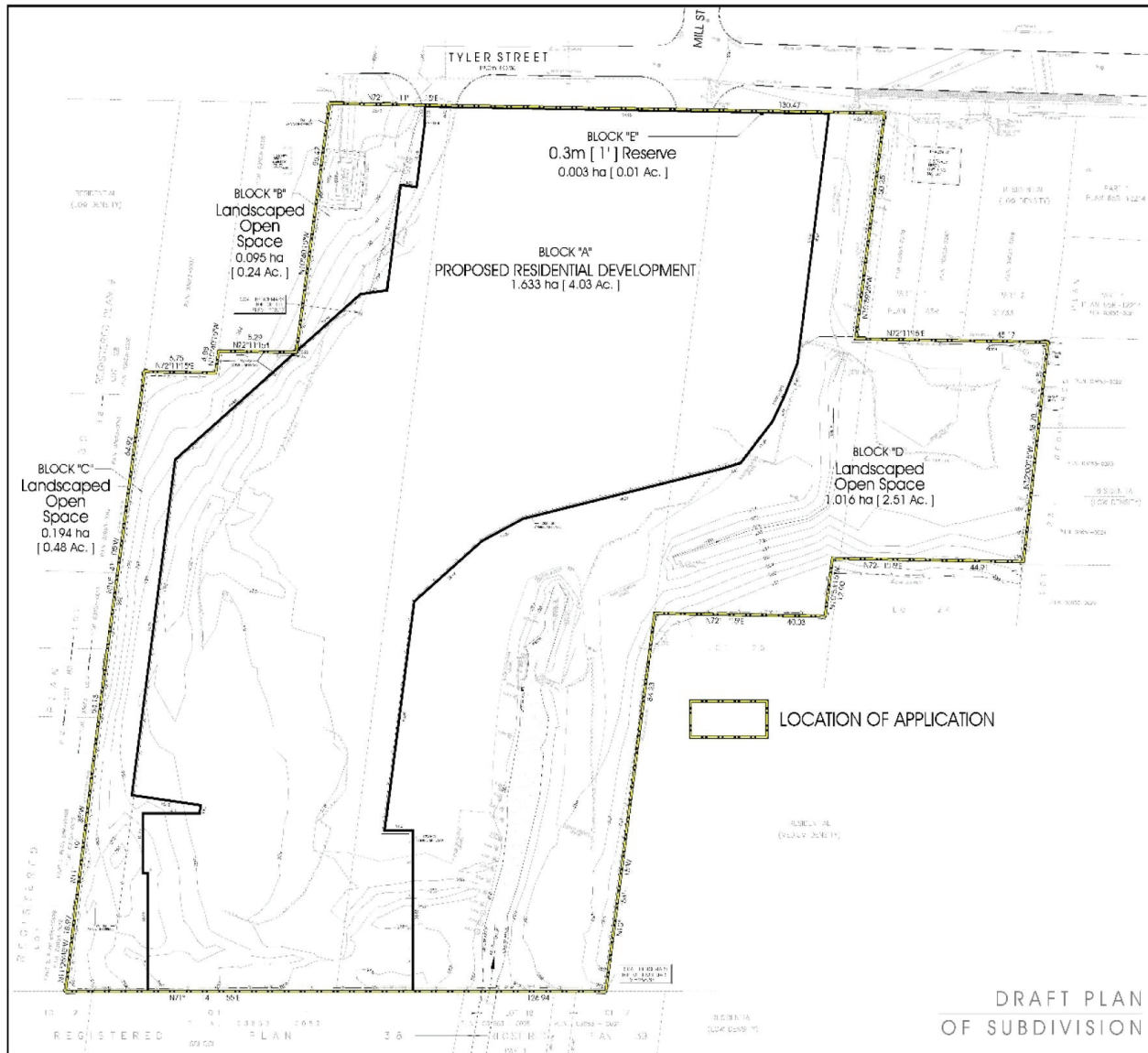


FIGURE 1

Map created for the Town of Aurora Planning & Development Services Department, 2024-09-24. Base data provided by the Town of Aurora and the Regional Municipality of York. Air photos taken Spring 2023, © First Base Solutions Inc., 2023 Orthophotography.



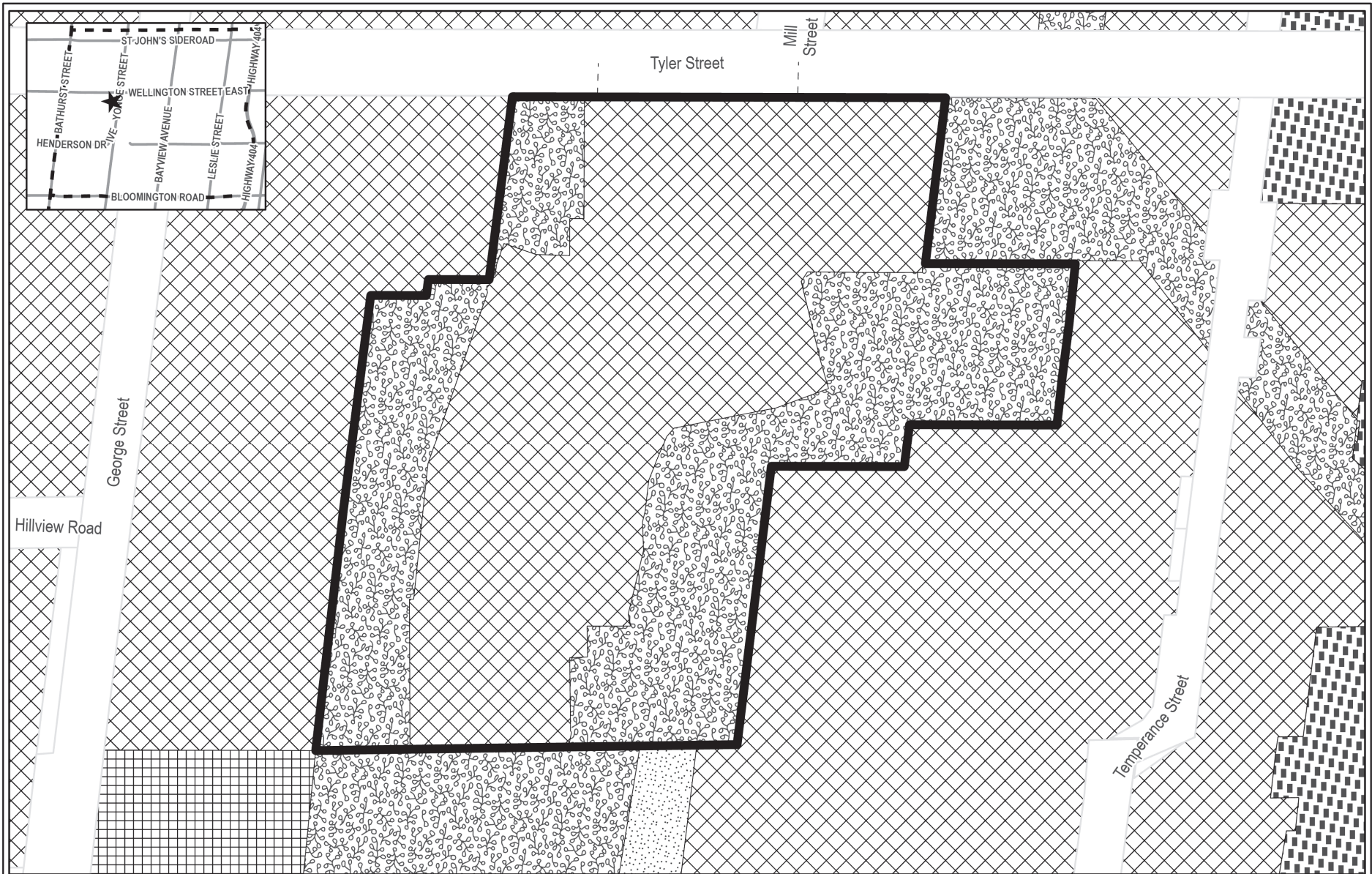
DRAFT APPROVED PLAN OF SUBDIVISION

APPLICANT: Charlieville Developments Ltd.
 FILE: SUB-2015-03

FIGURE 2




Map created for the Town of Aurora Planning & Development Services Department, 2024-09-24. Base data provided by the applicant.

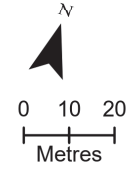


EXISTING OFFICIAL PLAN DESIGNATION

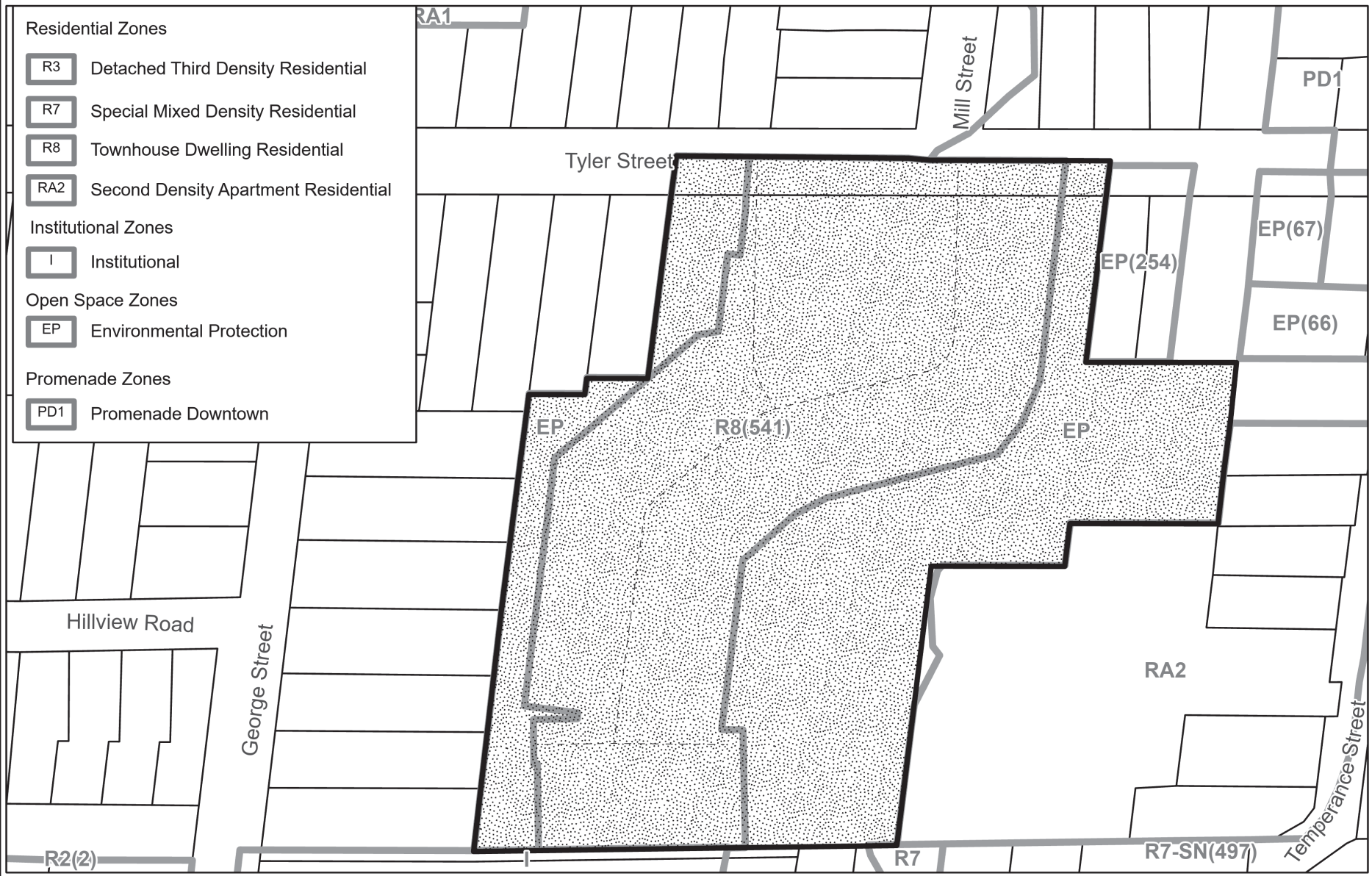
APPLICANT: Charlieville Developments Ltd.
 FILE: SUB-2015-03

FIGURE 3

-  Subject Lands
-  Community Services and Facilities
-  Public Parkland
-  Aurora Promenade and MTSA Mixed Use
-  Environmental Protection
-  Stable Neighbourhoods



Map created for the Town of Aurora Planning & Development Services Department, 2024-09-25. Base data provided by the Town of Aurora and the Regional Municipality of York. Air photos taken Spring 2023, © First Base Solutions Inc., 2023 Orthophotography.



LOCATION MAP

APPLICANT: Charlieville Developments Ltd.
 FILE: SUB-2015-03

 Subject Lands

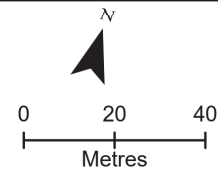


FIGURE 4

Map created for the Town of Aurora Planning & Development Services Department, 2024-09-25. Base data provided by the Town of Aurora and the Regional Municipality of York. Air photos taken Spring 2023, © First Base Solutions Inc., 2023 Orthophotography.