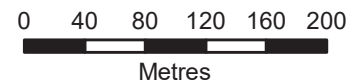


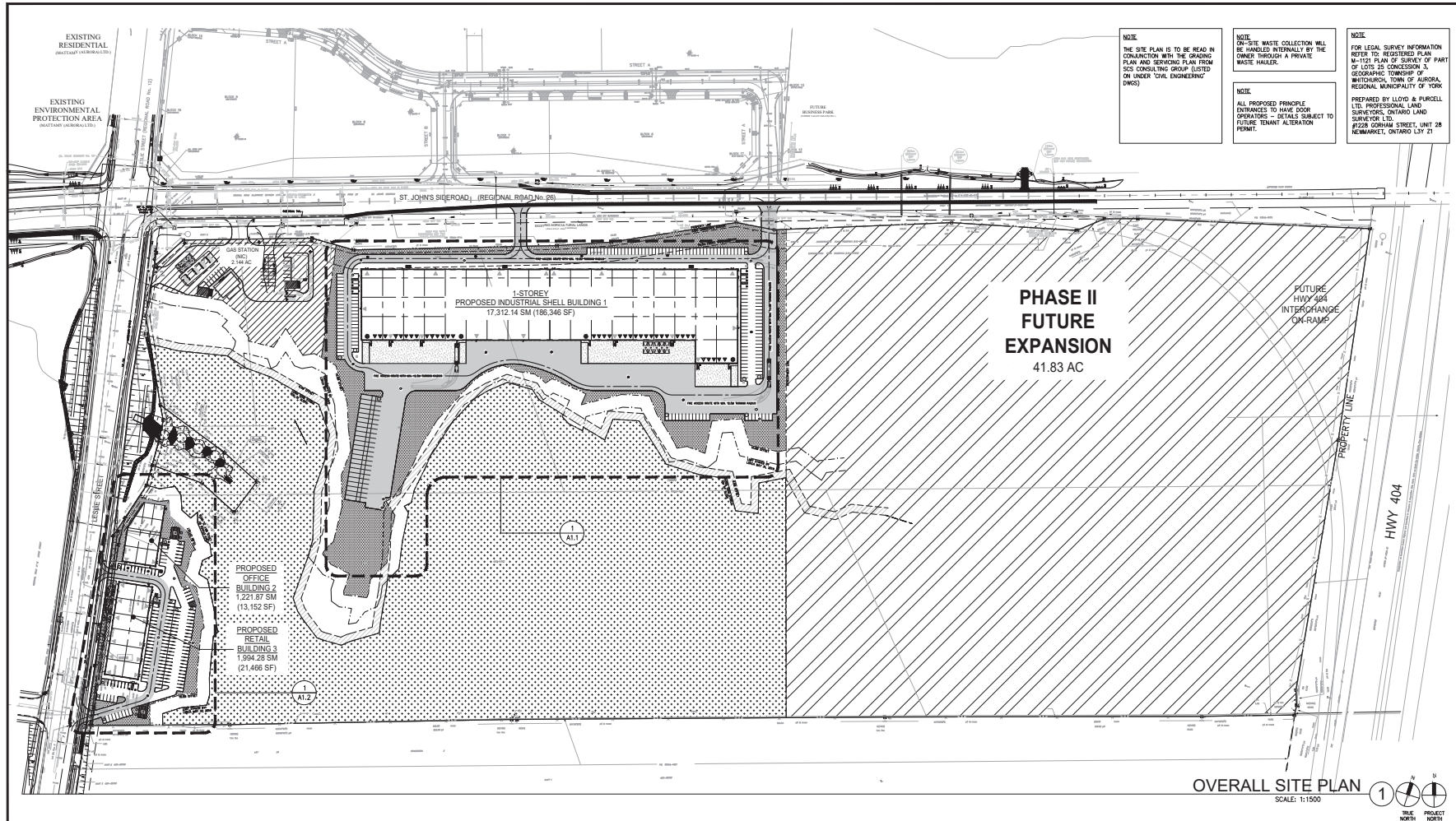
## LOCATION PLAN

1625-1675 ST. JOHNS SIDEROAD



**SUBJECT LANDS**





**NOTE:**  
THE SITE PLAN IS TO BE READ IN CONJUNCTION WITH THE GRADING PLAN AND SERVICES PLAN FROM SCS CONSULTING GROUP (LISTED ON UNDER "CIVIL ENGINEERING" DWGS)

**NOTE:**  
ON-SITE WASTE COLLECTION WILL BE HANDLED INTERNALLY BY THE OWNER THROUGH A PRIVATE WASTE HAULER.

**NOTE:**  
ALL PROPOSED PRINCIPLE ENTRANCES TO HAVE DOOR OPERATOR - DETAILS SUBJECT TO FUTURE TENANT ALTERATION PERMIT.

**NOTE:**  
FOR LEGAL SURVEY INFORMATION, REFER TO REGISTERED PLAN M-1123 PLAN 25 SURVEY OF PART OF LOTS 25 CONCESSION 3, GEORGIAN TOWNSHIP OF WHITCHURCH, TOWN OF AURORA, REGIONAL MUNICIPALITY OF YORK.  
PREPARED BY LLOYD & PURCELL LTD. PROFESSIONAL LAND SURVEYORS, ONTARIO LAND SURVEYOR LTD.  
#2228 GERRARD STREET, UNIT 208 NEWMARKET, ONTARIO L3Y 2T1

**WARE MALCOLM**  
architectural  
planning  
surveying  
civil engineering  
1800 bayside park, suite 100  
vaughan, ontario, L4K 5G9  
p 905.740.1221  
f 905.248.2366  
www.ware-malcolm.com

**St John's Sideroad Development**  
INDUSTRIAL SHELL, RETAIL & OFFICE  
LESIE ST & ST. JOHN'S SIDEROAD  
AURORA, ONTARIO

OVERALL SITE PLAN		
DATE	REVISIONS	
1	2020-03-18	ISSUED FOR SPA

PA / PM:	WM
DRAWN BY:	DT
JOB NO.:	TOR18-0085-00

SHEET  
**A1.0**

## PROJECT DATA

TOTAL DEVELOPMENT - ST. JOHN'S SIDEROAD DEVELOPMENT - OVERALL SITE			
Building Category	Area (sqm)	Area (sqft)	Area (ac)
Industrial - Office - Retail	17,312.14	180,346	41.83
Office - Retail	1,221.87	13,152	3.02
Retail	1,994.28	21,468	4.94
<b>TOTAL BUILDING AREA</b>	<b>20,528.29</b>	<b>221,962</b>	<b>50.79</b>

Building Category	Area (sqm)	Area (sqft)	Area (ac)
Industrial - Office - Retail	17,312.14	180,346	41.83
Office - Retail	1,221.87	13,152	3.02
Retail	1,994.28	21,468	4.94
<b>TOTAL BUILDING AREA</b>	<b>20,528.29</b>	<b>221,962</b>	<b>50.79</b>

## SITE LEGEND

	NEW HEAVY DUTY PAVEMENT (HATCHED)
	CONCRETE APRON
	PAINTED DIAGONAL LINES WHERE INDICATED
	NEW LANDSCAPING AREA (HATCHED)
	EXISTING MIXED FOREST AREA
	FIRE ACCESS ROUTE MIN. 12.0M TURNING RADII
	PROPERTY LINE
	PARKING STALL COUNT TOTAL
	KNOCK OUT PANEL
	MAN DOOR ENTRY
	TRUCK LOADING DOCK DOOR
	DRIVE IN DOOR
	BARRIER-FREE PARKING SPACE WITH SIGNAGE AT SIDEWALK
	DEPRESSED CURB FOR BARRIER-FREE ACCESS
	FLUSH CURB
	PROPOSED FIRE HYDRANT
	PROPOSED SANITARY MANHOLE
	PROPOSED STORM WATER MANHOLE
	FIRE DEPARTMENT CONNECTION

## KEY PLAN

