

CONCEPTUAL SITE PLAN (SEPTEMBER 16, 2025)

APPLICANT: AURORA-LESLIE DEVELOPMENTS INC.

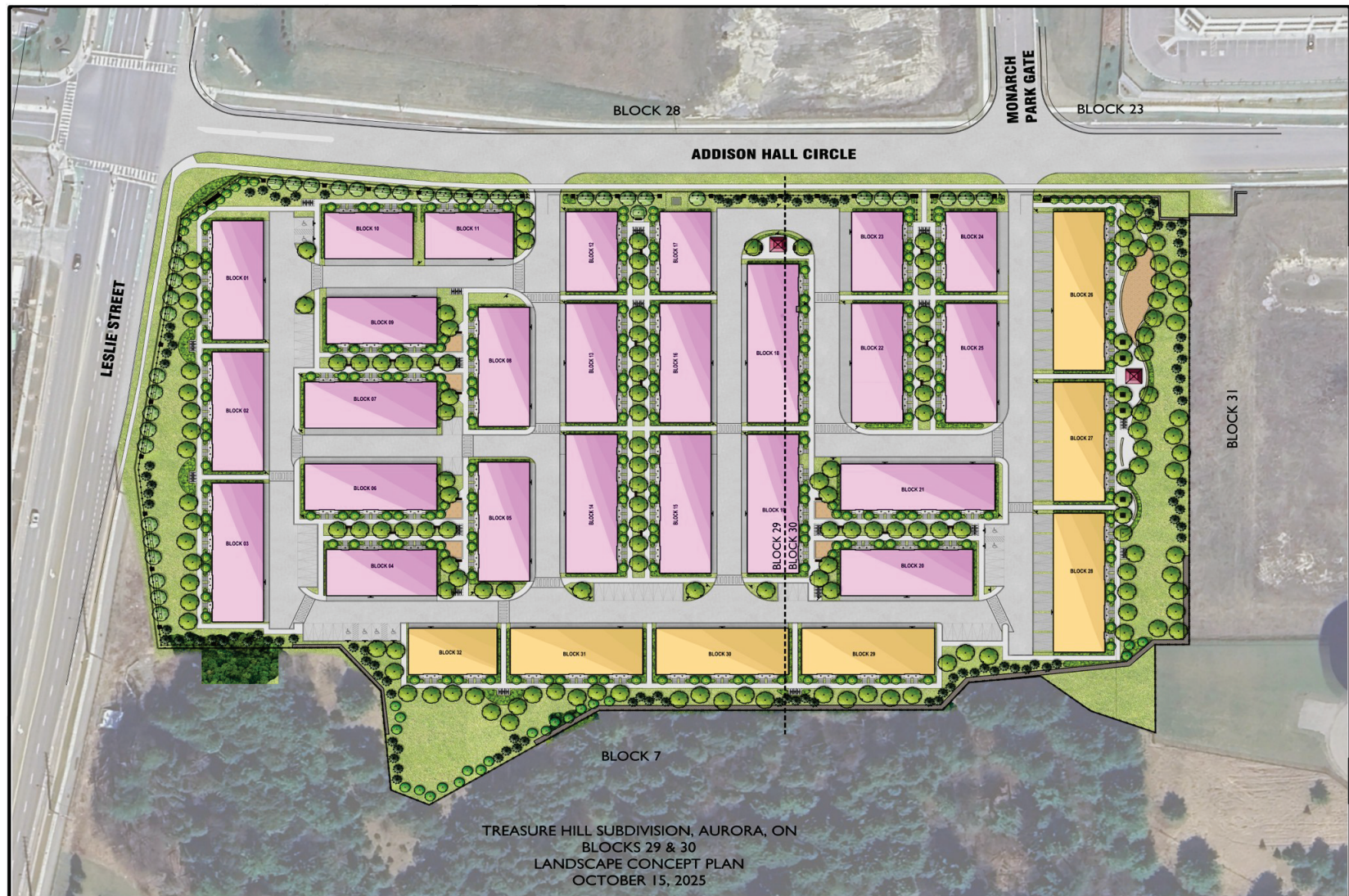
FILES: OPA-2025-06 & ZBA-2025-06

FIGURE 5



Map created by the Town of Aurora Planning and Building Services Department, 2025-11-06. Base data provided by York Region & the Town of Aurora.

Document Path: J:\data\data Planning Maps\25_55_Addison_Hall_Circle_Aurora_Leslie_Developments_OPA-2025-06_and_ZBA-2025-06\Report_Maps_25_55_Addison_Hall_July_2025.aprx

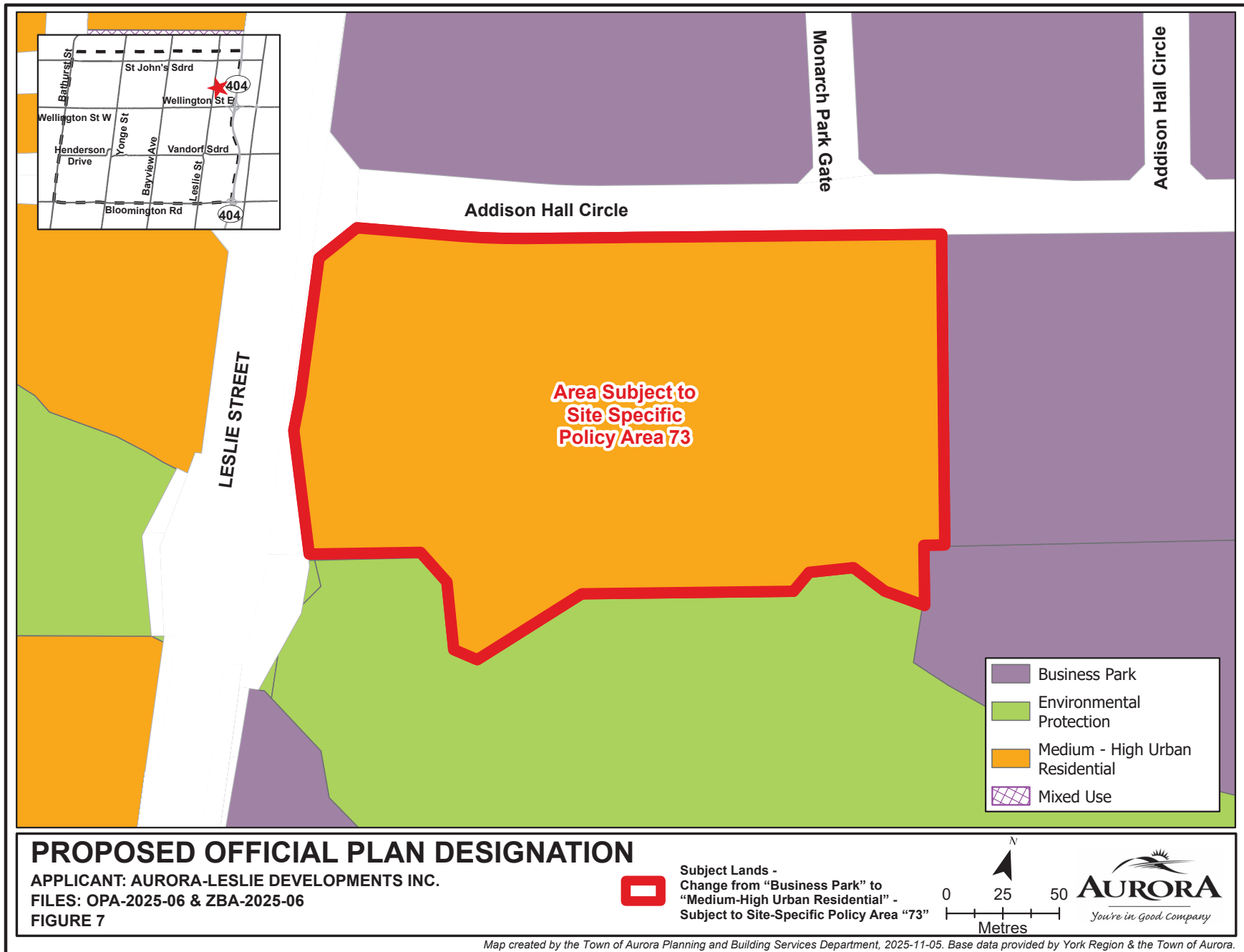


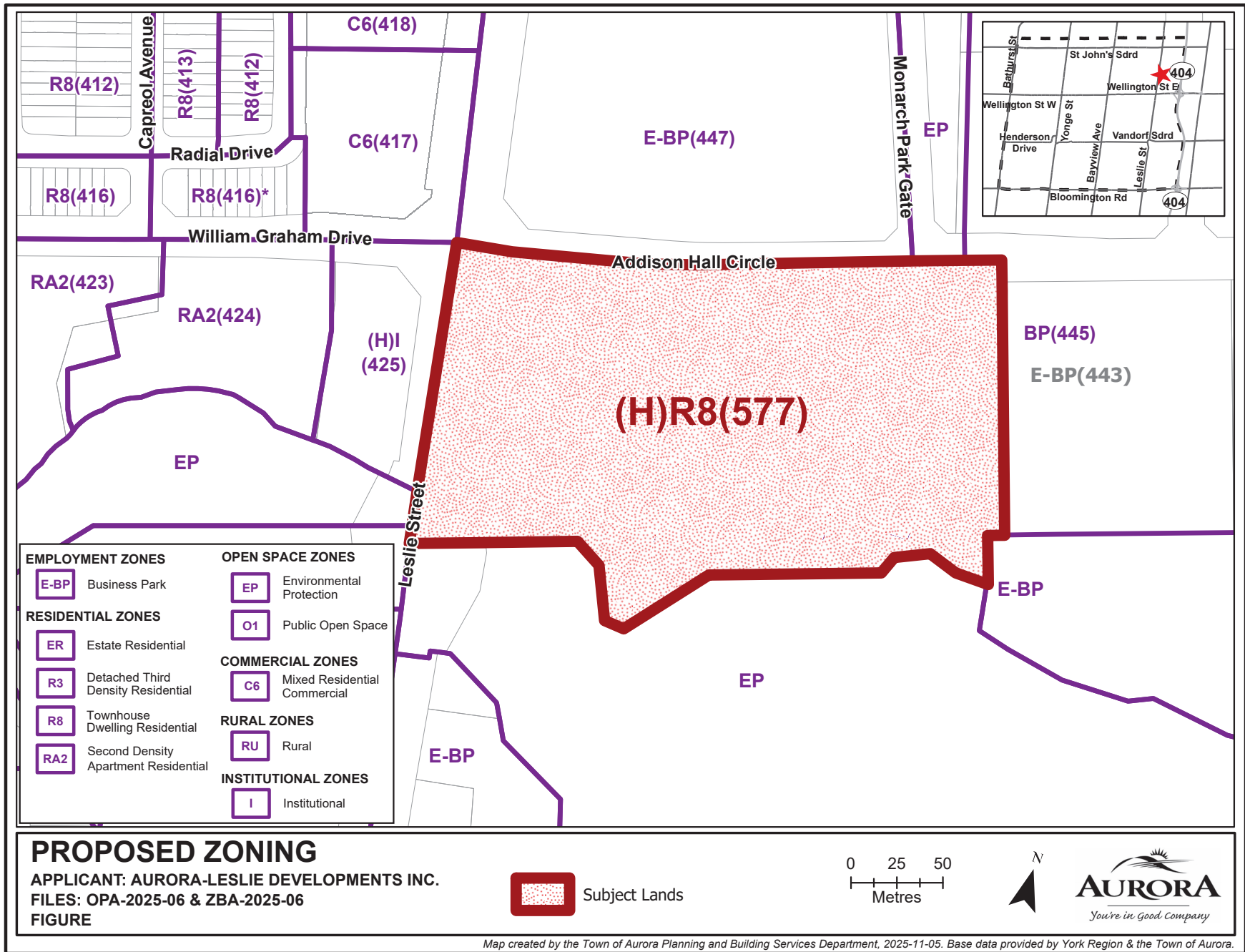
REVISED CONCEPTUAL SITE PLAN

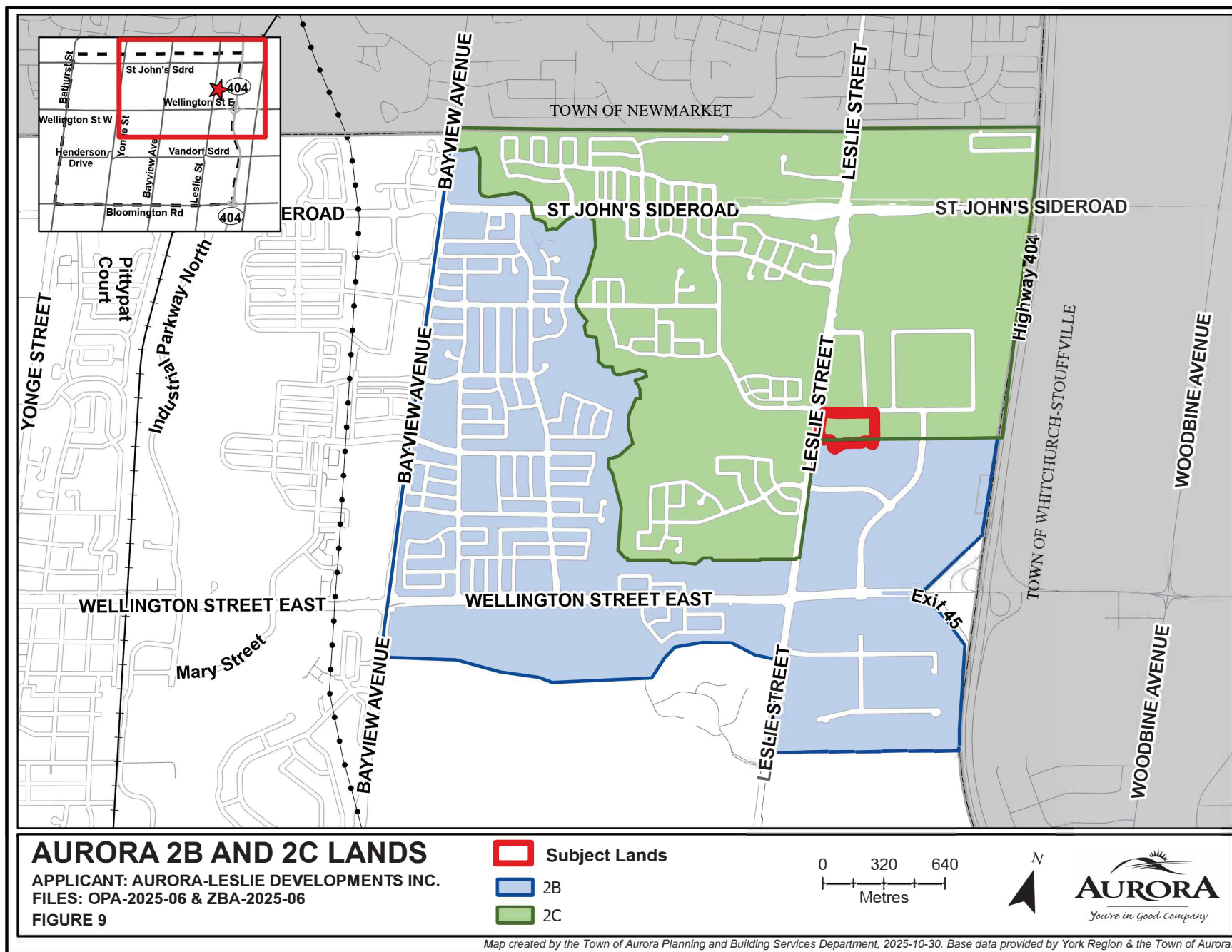
APPLICANT: AURORA-LESLIE DEVELOPMENTS INC.
 FILES: OPA-2025-06 & ZBA-2025-06
 FIGURE 6



Map created by the Town of Aurora Planning and Building Services Department, 18/08/2025. Base data provided by York Region & the Town of Aurora.









CONCEPTUAL ELEVATIONS

APPLICANT: AURORA-LESLIE DEVELOPMENTS INC.

FILES: OPA-2025-06 & ZBA-2025-06

FIGURE 10

