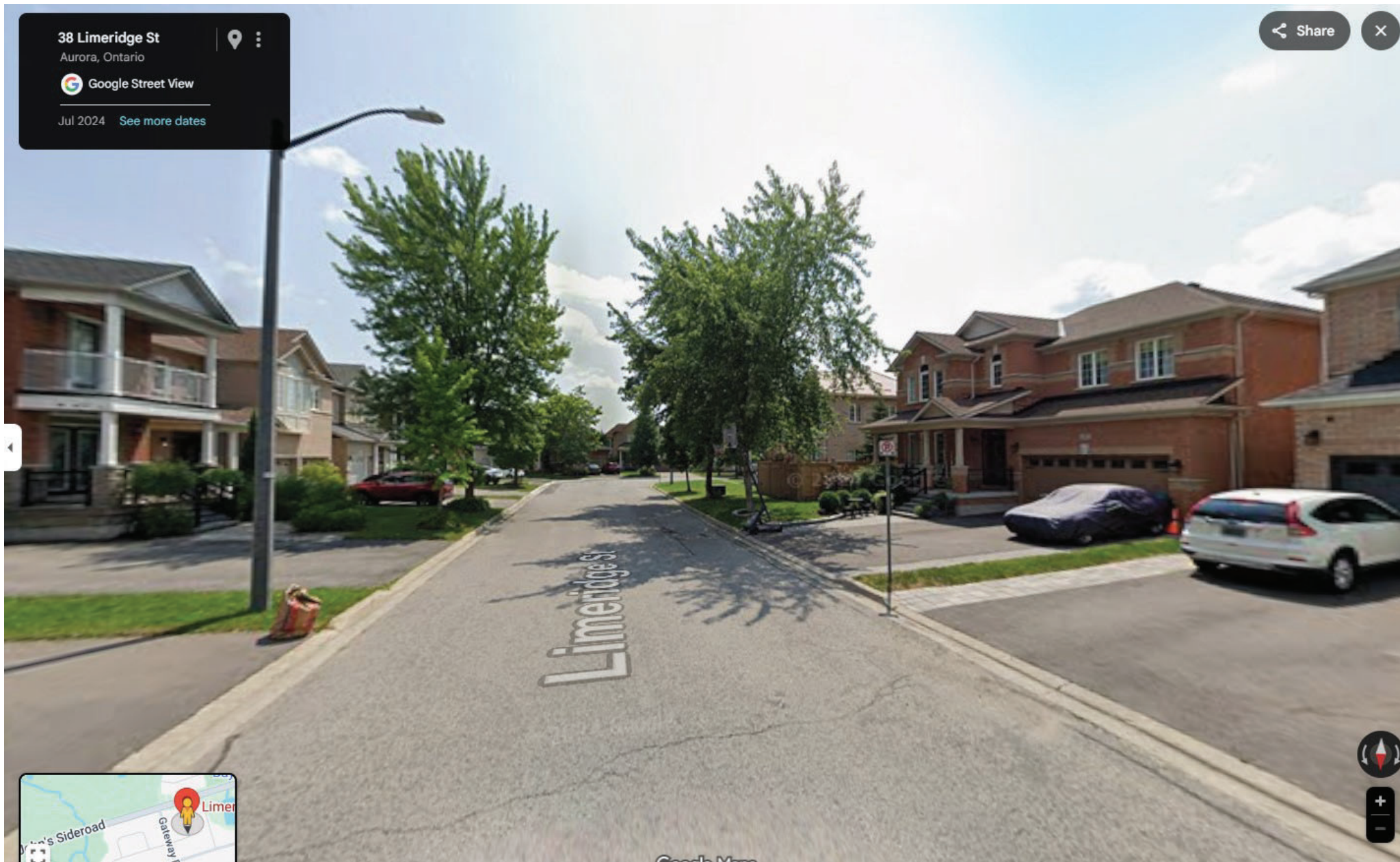


OVERVIEW OF LIMERIDGE STREET - CONDUIT FROM St. JOHN'S SIDEROAD / GATEWAY to KIRKVALLEY / BAYVIEW





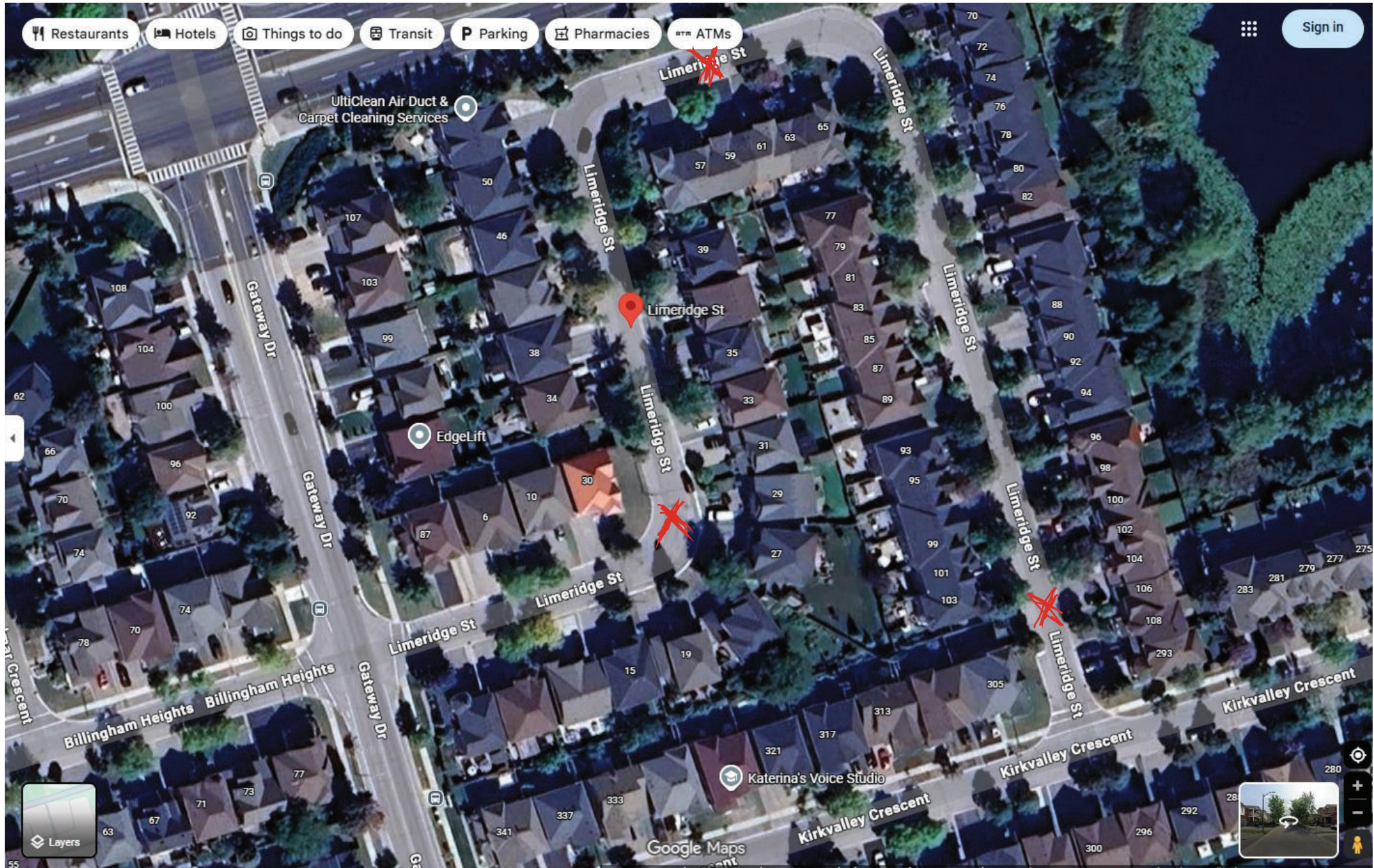
STREET HAS NO SIDEWALKS - NOWHERE FOR RESIDENTS TO WALK / CHILDREN TO PLAY OTHER THAN ON STREET





SPEEDING ISSUE IS AMPLIFIED BY BLIND CORNER CREATED BY OVERGROWN FOLIAGE AT 55 LIMERIDGE ST.





82% OF HOUSEHOLDS SUPPORT TRAFFIC CALMING MEASURES (BOLLARDS) - VOTED ALL IN FAVOUR AT COUNCIL