

Aurora Community Reflection Space

FOTENN
Planning + Design



Chisholm, Fleming & Associates
CONSULTING ENGINEERS



Aurora Town Hall

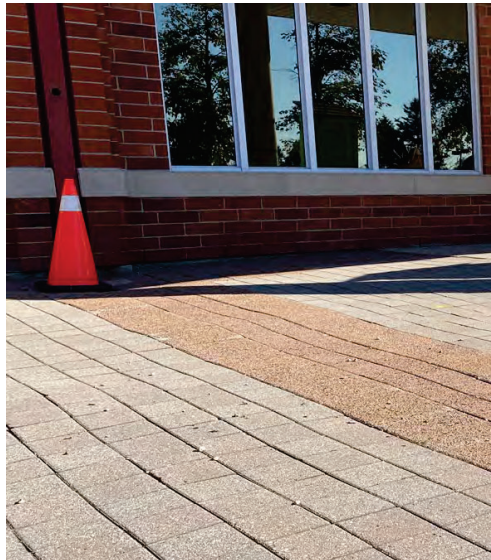
Aurora Senior
Centre

John West Way

Our collective design work and proposed interventions are informed by the robust public engagement process carried out by the Town of Aurora, including critical input from the following KEY groups:

- Town of Aurora's Indigenous Relations Committee
- Accessibility Advisory Committee
- Parks & Recreation Advisory Committee
- York Regional Police
- Oasis Bereavement
- Town Staff & Residents

Existing Conditions



Surfaces and Water

Existing Pavement in need of replacement. Buckling, sinking, and breakage pose hazards to wheel chairs, walkers, canes, and strollers. Collectively the general condition belays poor drainage and material end of life.



Cultural Practices and Durability

Existing trees are in poor condition if not dead. Trees show sign of restricted soil volumes and poor soil conditions. De-icing salt is likely contributing to mortality.

Note: This was not the only orange cone on site in the pedestrian area.

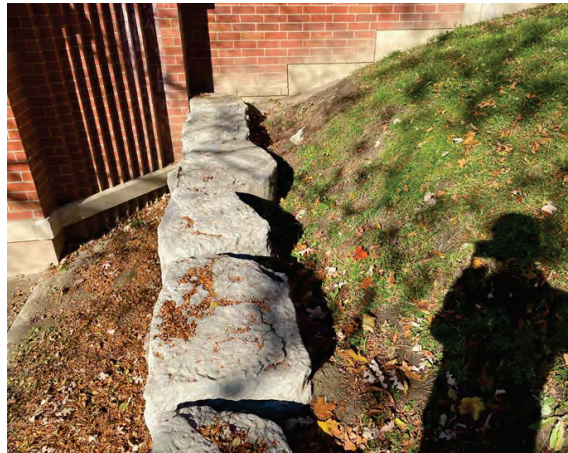




Poorly Defined Space

Left: Bollards currently used to deter vehicles on pedestrian areas.

Right: Unit paving damage from repeat vehicle encroachment.



Erosion and Unstable Slopes

Currently soil type combined with grading strategy has created a highly erodible condition, with bare soils and shifting infrastructure. These steep slopes also pose as a general barrier to the surrounding community.



Missed Opportunity For Community
Connectivity







Note: Trees represented as columns as to not visually block general design intent.





Image of "Sky Ribbon" Plinth depicting simple formwork impression that fades as it grows further from the Gathering Place.
Note: Vegetation removed to show relationship to adjacent spaces.



Contemplation Space with vegetation removed to show hardscape elements and spatial relationship of distinct areas.



The apron surrounding the Town Hall as an extension of meaningful community space for all ages, all abilities.

A built form to speak to and include all cultures

Improved Aesthetics, Safety, Biodiversity, Hydrology

Improved seasonal shade for events and ceremonies, as well as the south side of the architecture.

Total Accessible Carrying Capacity of Plaza/Contemplation Space: 462

Scaled Spaces for various levels of activity, from gathering to personal grieving.

Existing Carrying Capacity of Parking Lot:
Standard Spaces: 97
Accessible Spaces: 13

Proposed Carrying Capacity of Parking Lot:
Standard Spaces: 114
Accessible Spaces: 13