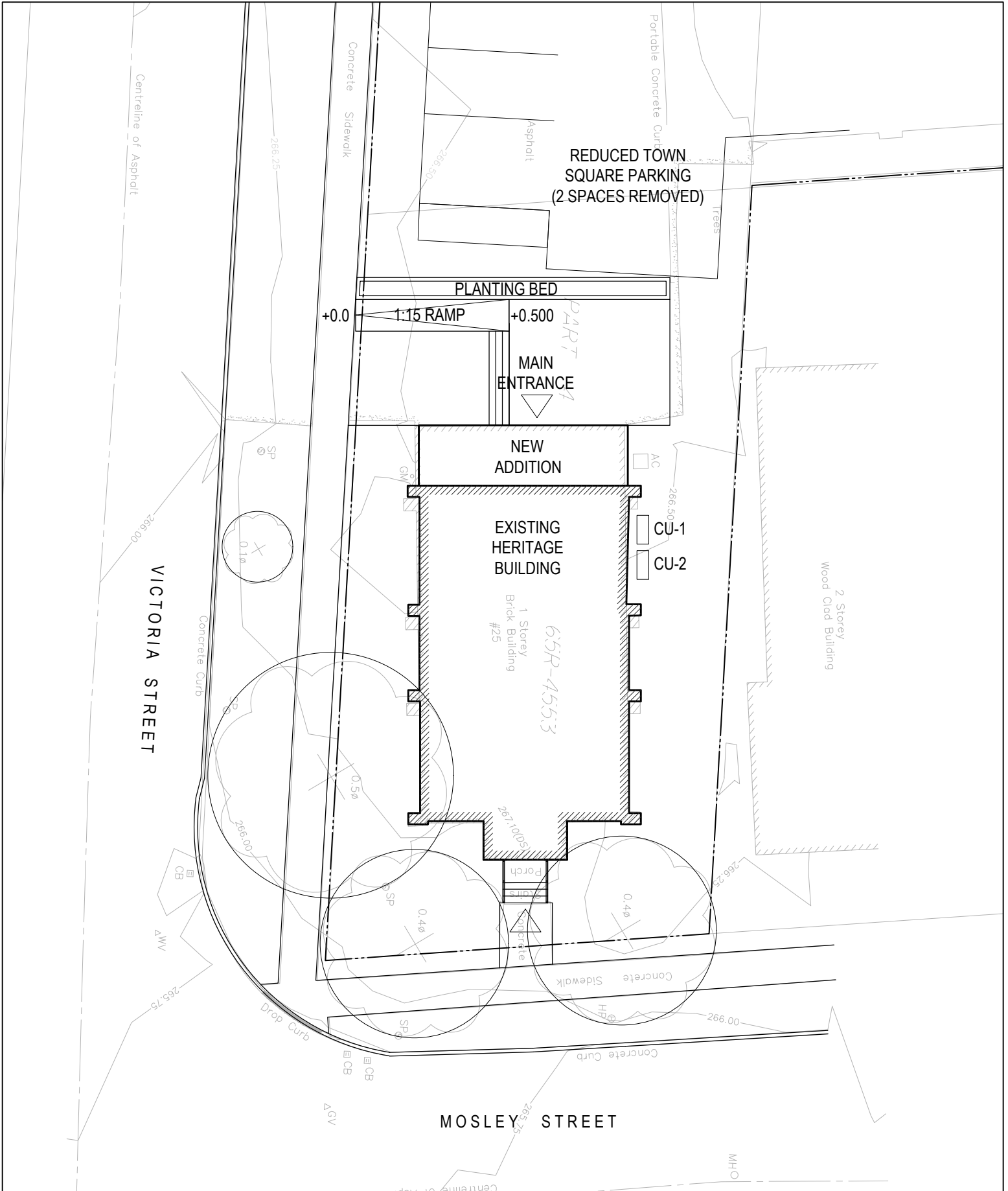


VICTORIA HALL RESTORATION AND RENOVATION

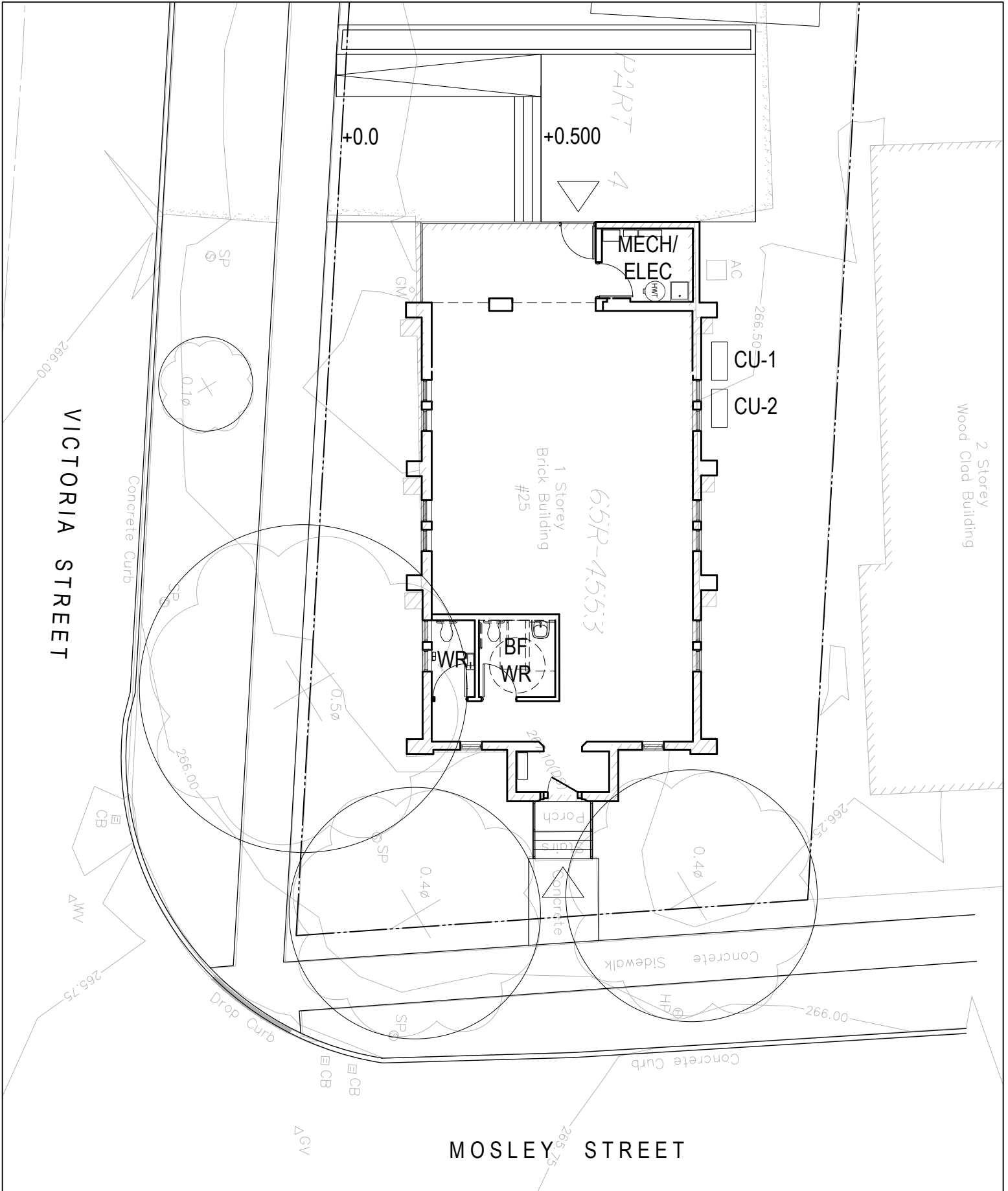
Town of Aurora



VICTORIA HALL - SITE PLAN

25 Mosley St, Aurora, ON L4G 1R2

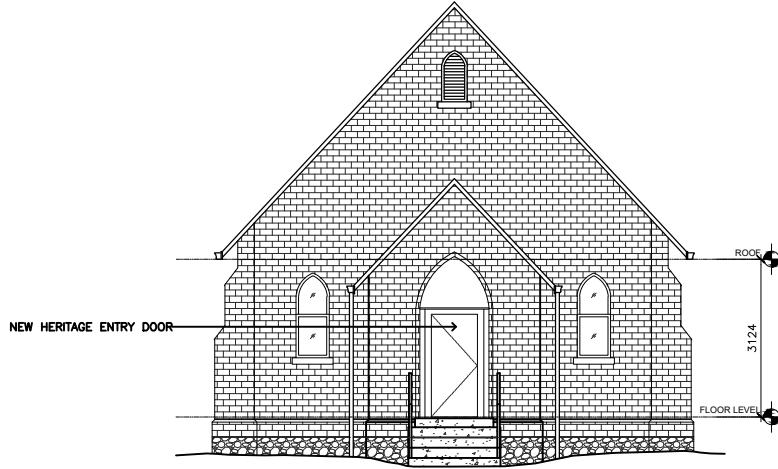
1:200



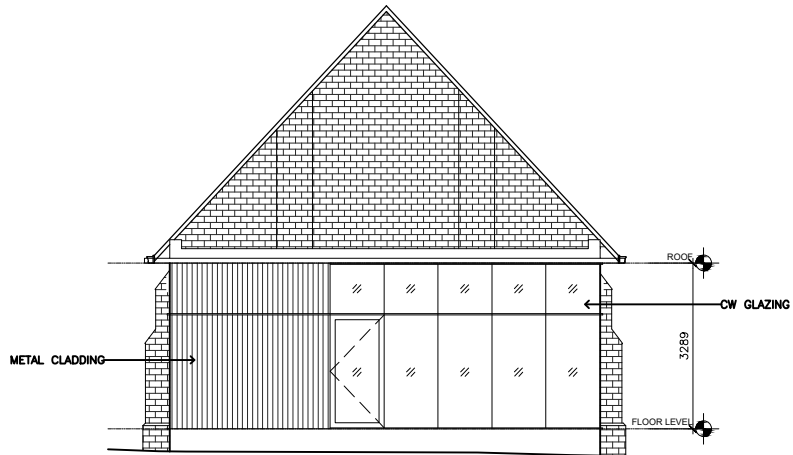
VICTORIA HALL - GROUND FLOOR PLAN

25 Mosley St, Aurora, ON L4G 1R2

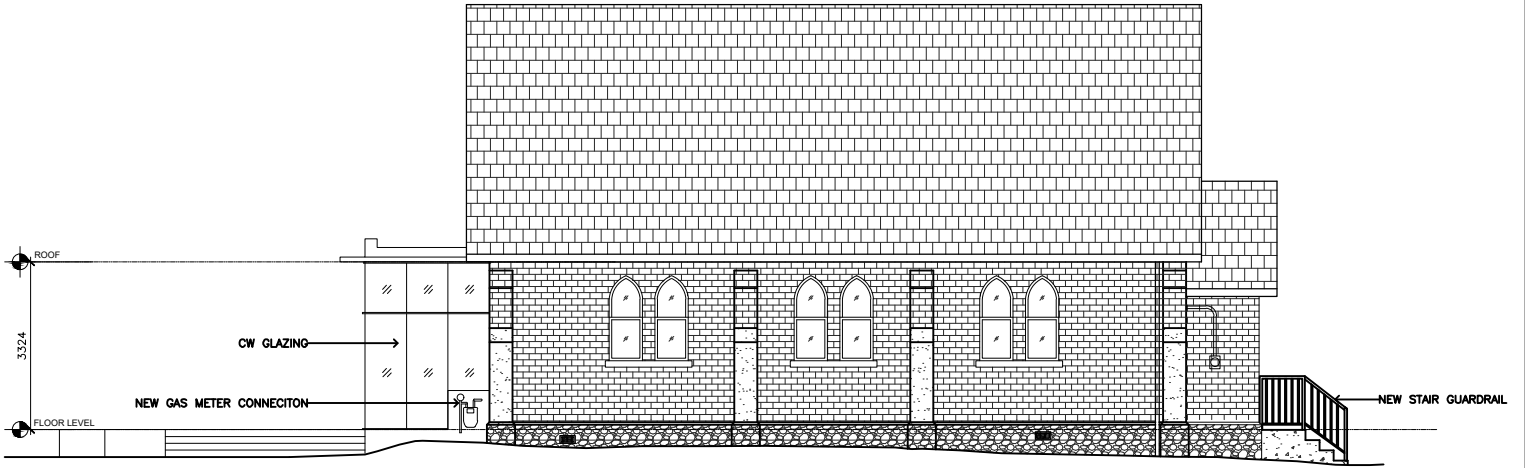
1:150



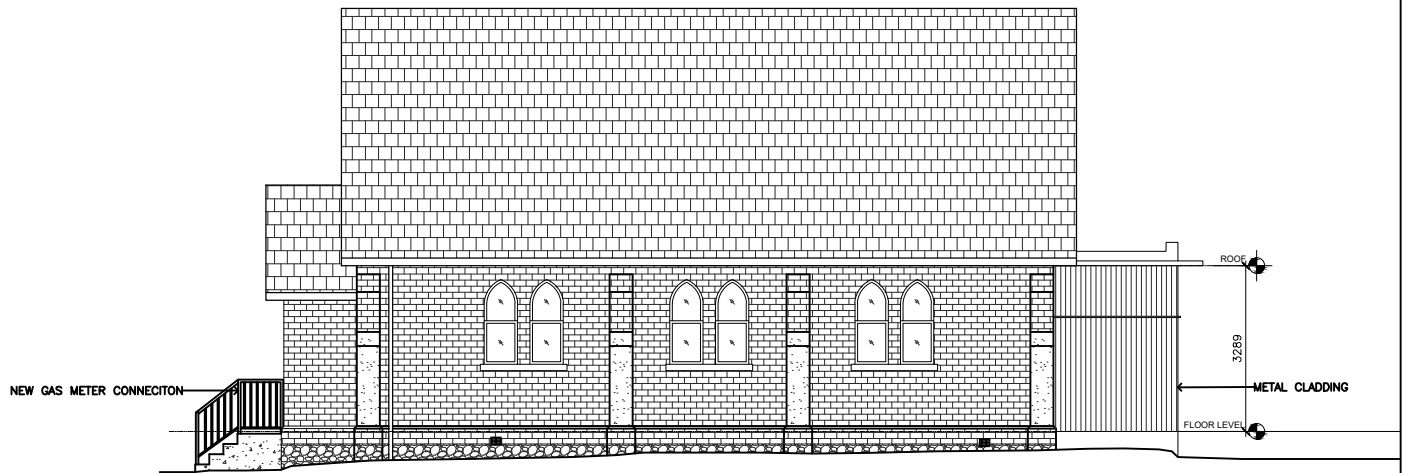
NORTH elevation



SOUTH elevation



EAST elevation



WEST elevation

VICTORIA HALL - EAST AND WEST ELEVATIONS

25 Mosley St, Aurora, ON L4G 1R2

1:150



VICTORIA HALL - 3D VIEWS

25 Mosley Street, Aurora, ON L4G 1R2