

LOCATION PLAN

APPLICANT: Shimvest Investments Limited
 FILE: OPA-2021-04, ZBA-2021-05 and SP-2021-10

 Subject Lands

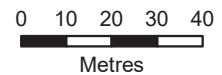
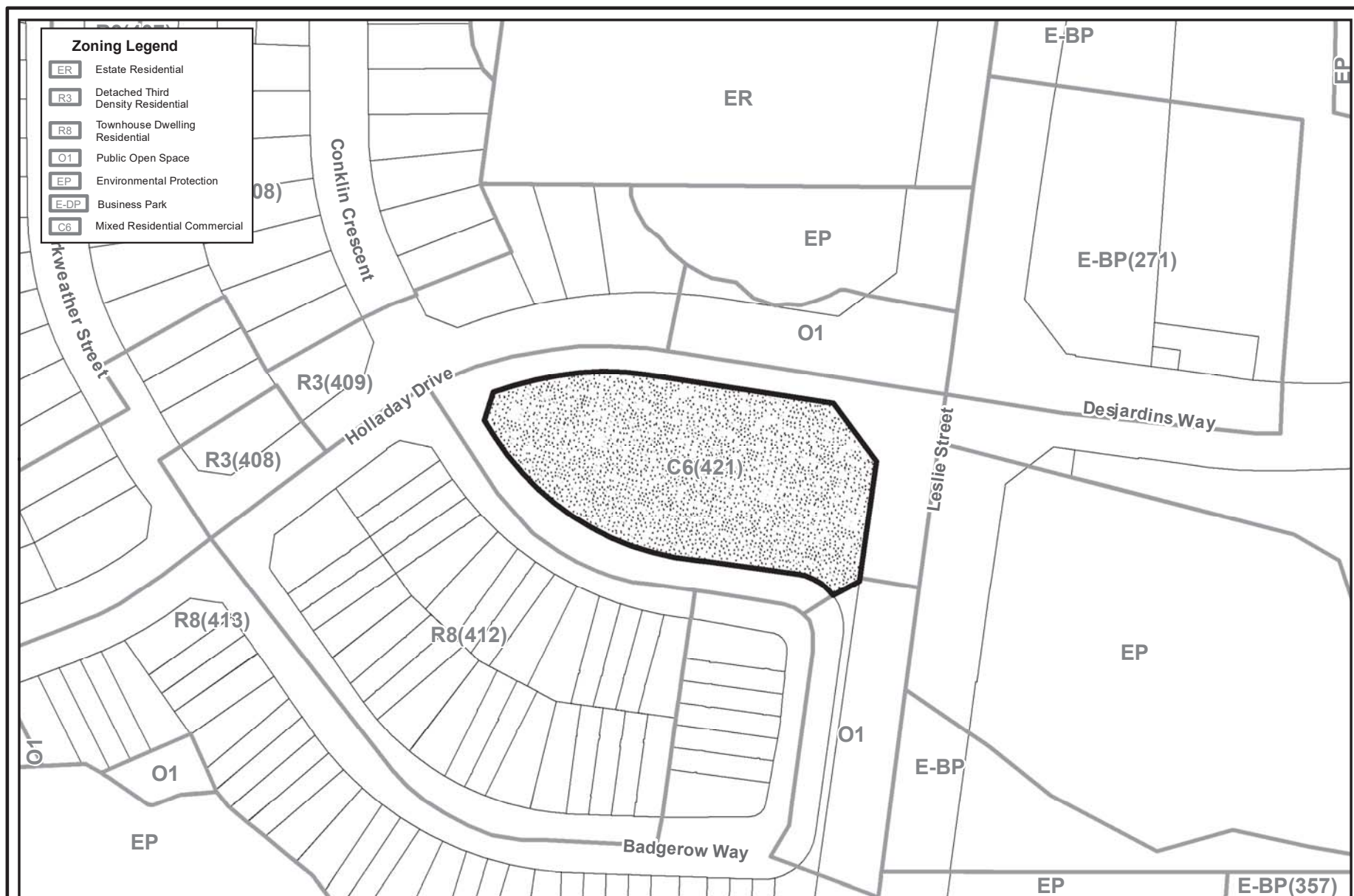


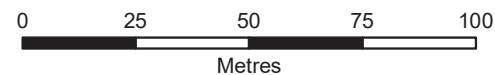
FIGURE 1

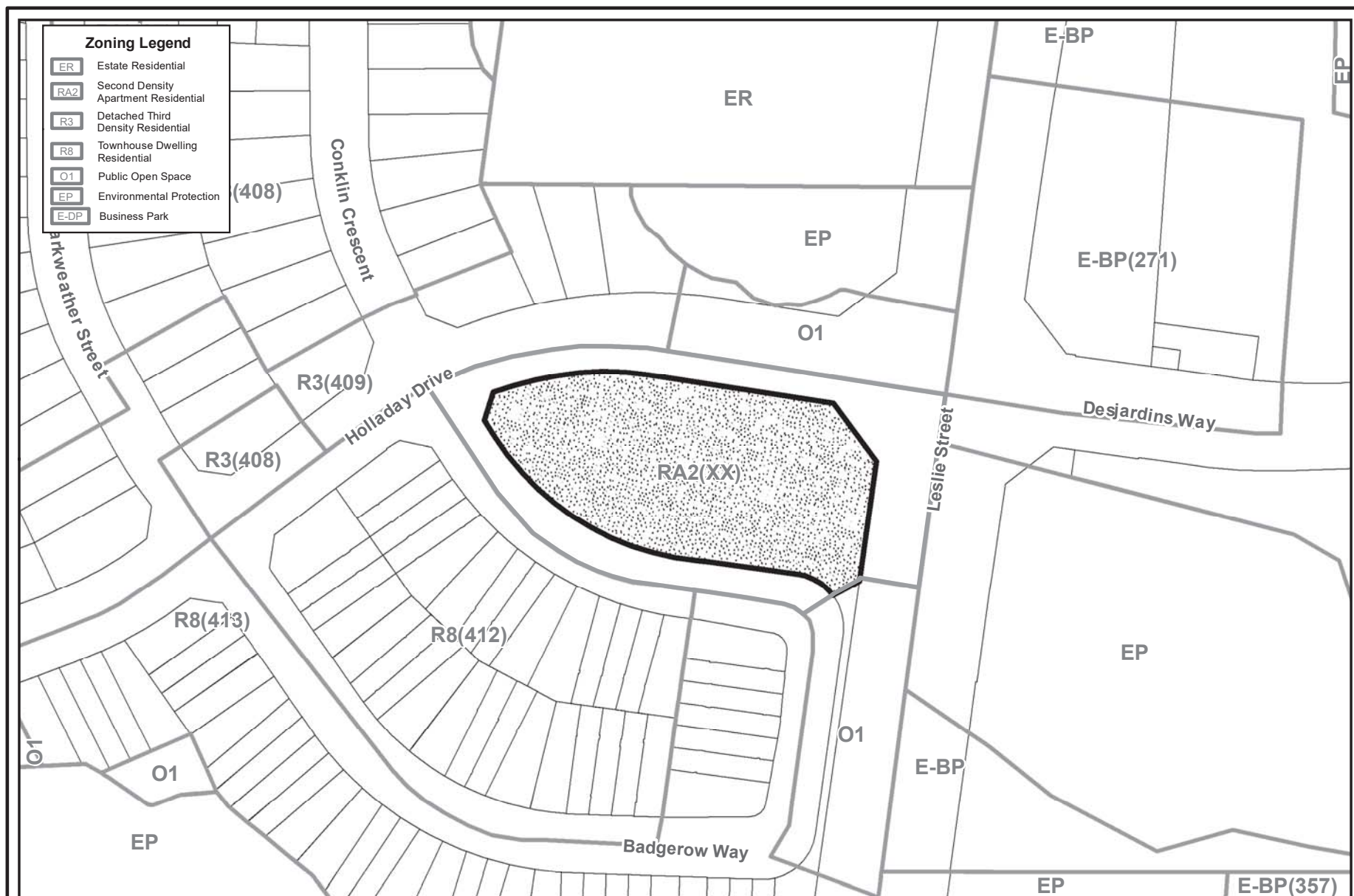


EXISTING ZONING BY-LAW

APPLICANT: Shimvest Investments Limited
 FILE: OPA-2021-04, ZBA-2021-05 and SP-2021-10
 FIGURE 3

 **SUBJECT LANDS**



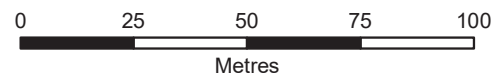


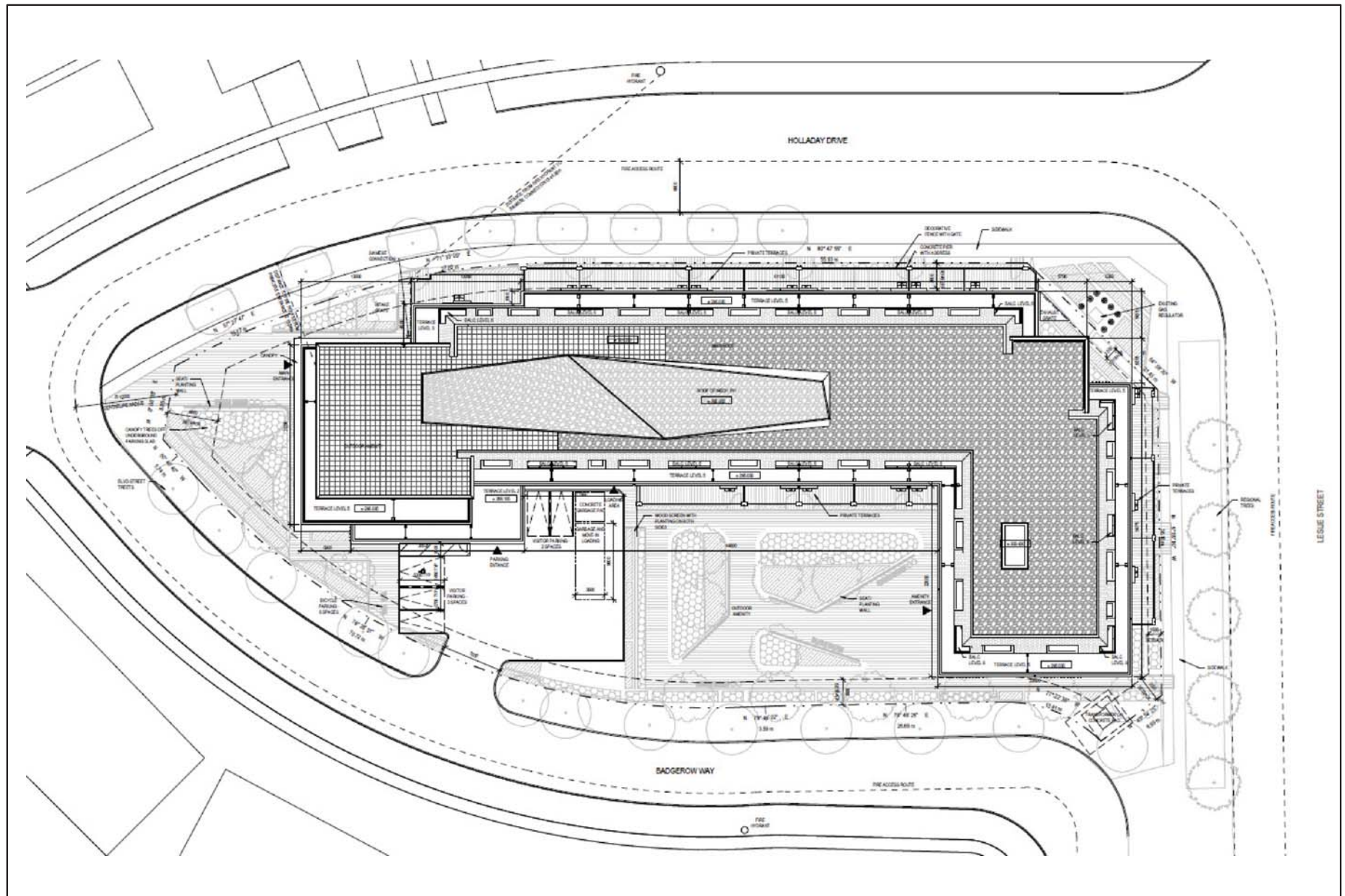
PROPOSED ZONING BY-LAW

APPLICANT: Shimvest Investments Limited
 FILE: OPA-2021-04, ZBA-2021-05 and SP-2021-10
 FIGURE 4



SUBJECT LANDS





PROPOSED SITE PLAN

APPLICANT: Shimvest Investments Limited

FILE: OPA-2021-04, ZBA-2021-05 and SP-2021-10

FIGURE 5



Map created by the Town of Aurora Corporate Services Department, October 5, 2021. Data provided by bnkc Architecture + Urban Design.



PROPOSED RENDERINGS

APPLICANT: Shimvest Investments Limited
FILE: OPA-2021-04, ZBA-2021-05 and SP-2021-10
FIGURE 6A



Map created by the Town of Aurora Corporate Services Department, October 5, 2021. Data provided by Shimvest Investments Limited.



PROPOSED RENDERINGS

APPLICANT: Shimvest Investments Limited
FILE: OPA-2021-04, ZBA-2021-05 and SP-2021-10
FIGURE 6B



Map created by the Town of Aurora Corporate Services Department, October 5, 2021. Data provided by Shimvest Investments Limited.



PROPOSED RENDERINGS

APPLICANT: Shimvest Investments Limited
FILE: OPA-2021-04, ZBA-2021-05 and SP-2021-10
FIGURE 6C



Map created by the Town of Aurora Corporate Services Department, October 5, 2021. Data provided by Shimvest Investments Limited.

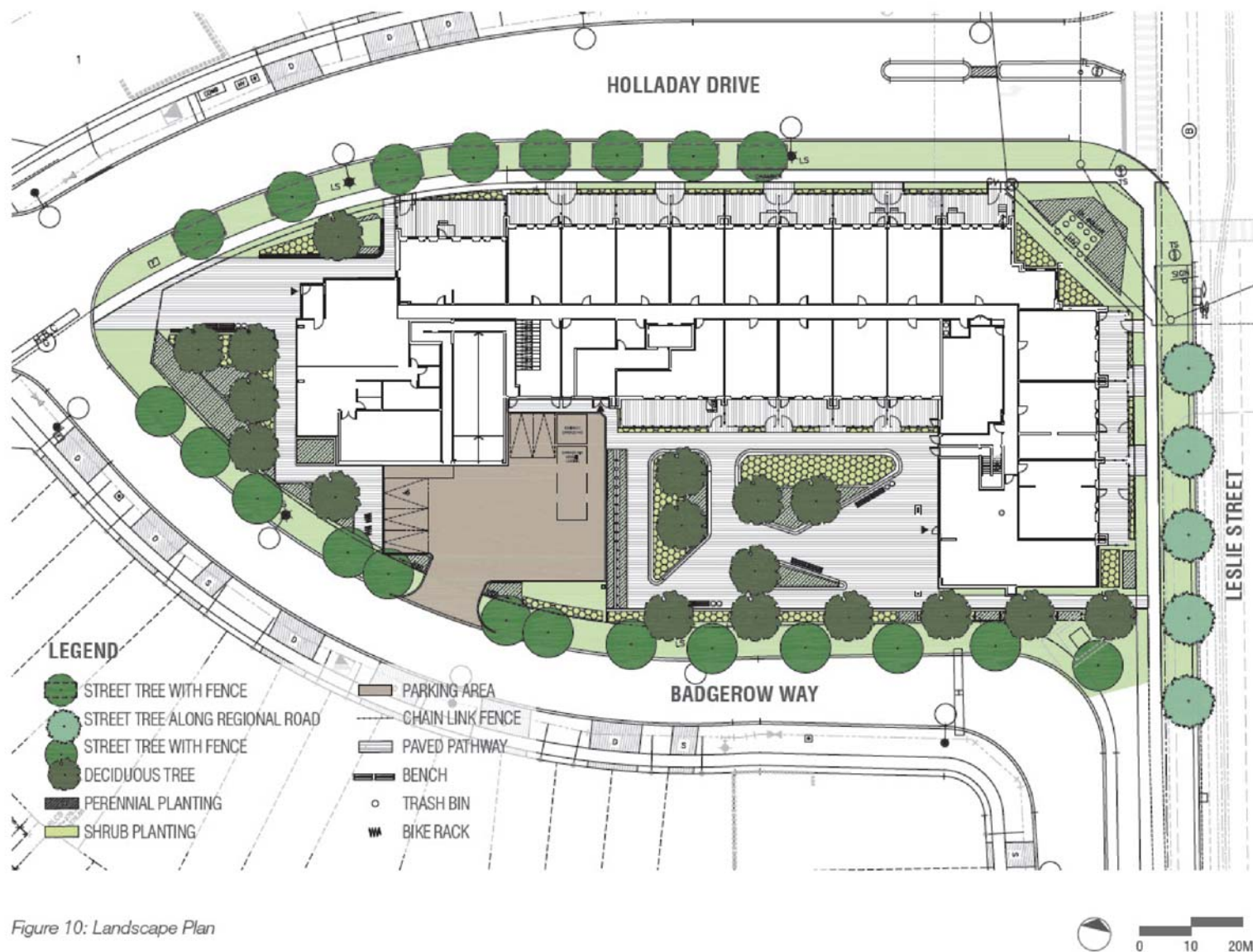


Figure 10: Landscape Plan

PROPOSED LANDSCAPE PLAN

APPLICANT: Shimvest Investments Limited

FILE: OPA-2021-04, ZBA-2021-05 and SP-2021-10

FIGURE 7