

## LOCATION MAP

APPLICANT: 15370 Leslie (Skale) Inc.

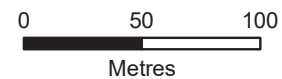
LOCATION: 15370 Leslie Street

FILES: SUB-2019-02

FIGURE 1

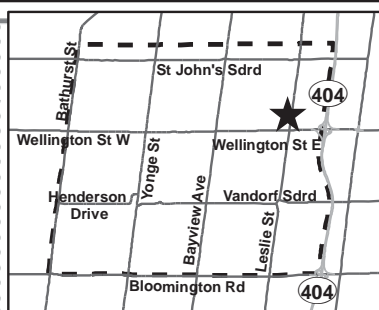


**SUBJECT LANDS**



**AURORA**  
*You're in Good Company*





- OPA 73**
- Environmental Protection Area
  - Mixed-Use Residential/Commercial
  - Park
  - Place of Worship
  - Stormwater Management Facility
  - Urban Residential 1
  - Urban Residential 2
- OPA 30**
- Medium-High Density Residential
  - Institutional
  - Business Park -Regional Commercial Centre
  - Business Park
  - Community Commercial
  - Linear and Other Open Space

WELLINGTON STREET EAST

WELLINGTON STREET EAST

LESLIE STREET

OPA 73

OPA 30

## EXISTING OFFICIAL PLAN DESIGNATION

APPLICANT: 15370 Leslie (Skale) Inc.

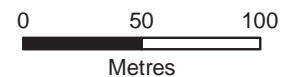
LOCATION: 15370 Leslie Street

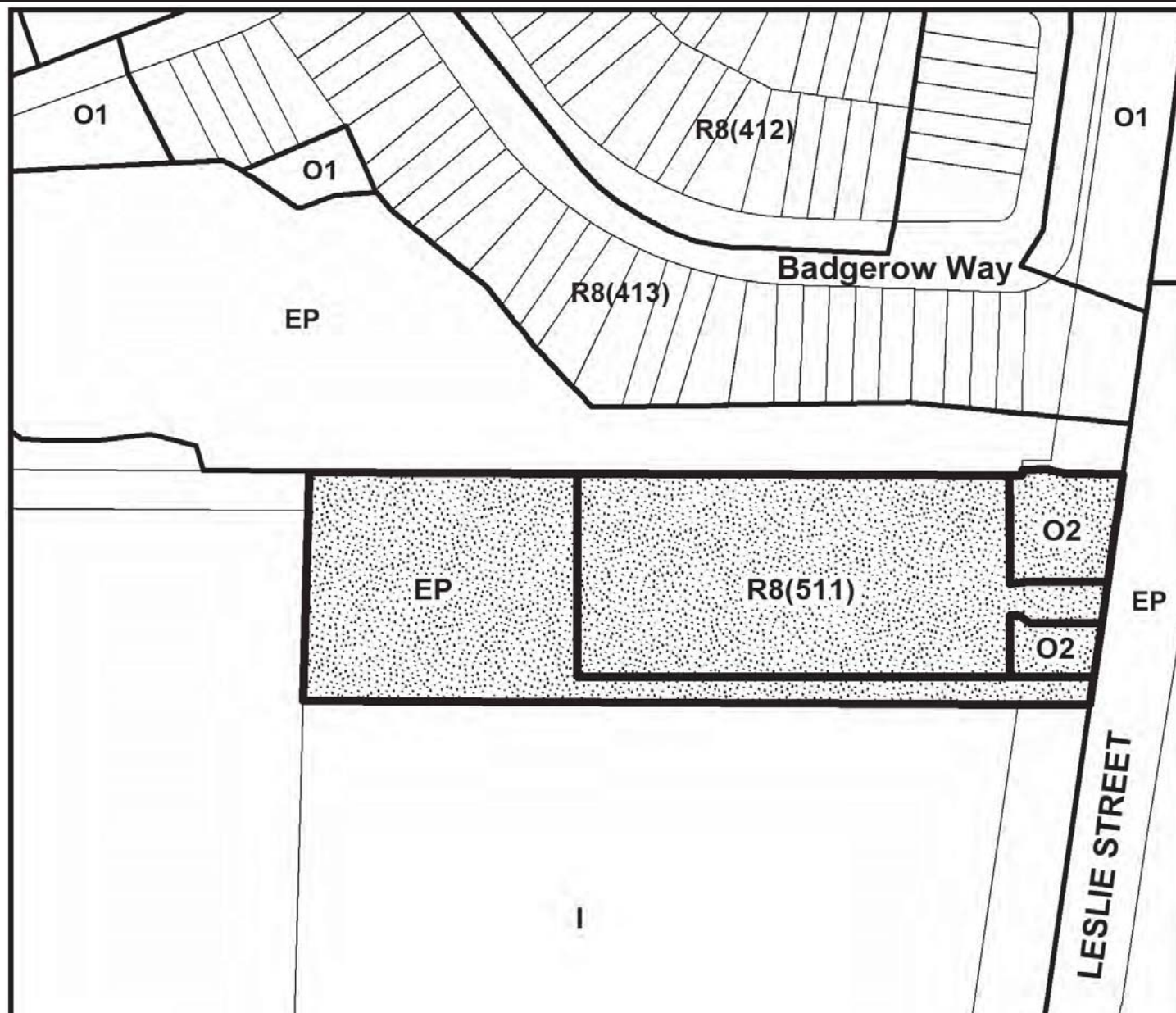
FILES: SUB-2019-02

FIGURE 2



SUBJECT LANDS





### Zoning Legend

#### RESIDENTIAL ZONES

**R3** Detached Dwelling  
Third Density

**R8** Row Dwelling

#### INSTITUTIONAL ZONES

**I** Institutional

#### OPEN SPACES ZONES

**OS** Major Open Space

**EP** Environmental Protection

## EXISTING ZONING BY-LAW

APPLICANT: 15370 Leslie (Skale) Inc.

LOCATION: 15370 Leslie Street

FILES: SUB-2019-02

FIGURE 3

 **SUBJECT LANDS**

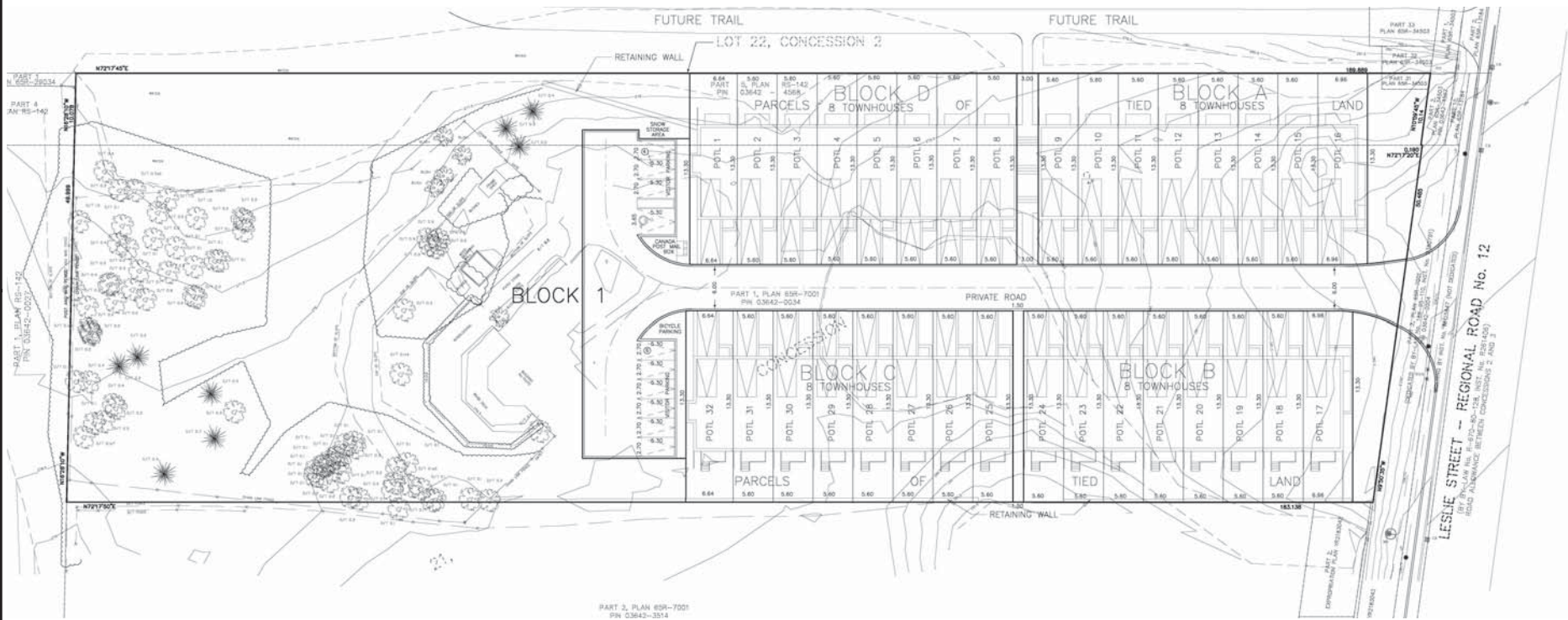
0 50 100  
Metres



  
**AURORA**  
You're in Good Company







## PROPOSED DRAFT PLAN OF SUBDIVISION

APPLICANT: 15370 Leslie (Skale) Inc.  
 LOCATION: 15370 Leslie Street  
 FILES: SUB-2019-02  
 FIGURE 5

